



## OPEN ACCESS

## EDITED BY

Xiaobo Mao,  
School of Medicine, Johns Hopkins University,  
United States

## REVIEWED BY

Ning Wang,  
School of Medicine, Johns Hopkins University,  
United States  
Ramhari Kumbhar,  
Johns Hopkins Medicine, United States

## \*CORRESPONDENCE

João Sargento-Freitas  
✉ jsargentof@hotmail.com

†These authors have contributed equally to this work and share first authorship

## SPECIALTY SECTION

This article was submitted to  
Alzheimer's Disease and Related Dementias,  
a section of the journal  
Frontiers in Aging Neuroscience

RECEIVED 21 November 2022

ACCEPTED 30 January 2023

PUBLISHED 16 February 2023

## CITATION

Sousa JA, Bernardes C, Bernardo-Castro S,  
Lino M, Albino I, Ferreira L, Brás J, Guerreiro R,  
Tábuas-Pereira M, Baldeiras I, Santana I and  
Sargento-Freitas J (2023) Reconsidering  
the role of blood-brain barrier in Alzheimer's  
disease: From delivery to target.  
*Front. Aging Neurosci.* 15:1102809.  
doi: 10.3389/fnagi.2023.1102809

## COPYRIGHT

© 2023 Sousa, Bernardes, Bernardo-Castro,  
Lino, Albino, Ferreira, Brás, Guerreiro,  
Tábuas-Pereira, Baldeiras, Santana and  
Sargento-Freitas. This is an open-access article  
distributed under the terms of the [Creative Commons Attribution License \(CC BY\)](https://creativecommons.org/licenses/by/4.0/). The use,  
distribution or reproduction in other forums is  
permitted, provided the original author(s) and  
the copyright owner(s) are credited and that the  
original publication in this journal is cited, in  
accordance with accepted academic practice.  
No use, distribution or reproduction is  
permitted which does not comply with  
these terms.

# Reconsidering the role of blood-brain barrier in Alzheimer's disease: From delivery to target

João André Sousa<sup>1†</sup>, Catarina Bernardes<sup>1†</sup>, Sara Bernardo-Castro<sup>1,2</sup>, Miguel Lino<sup>3</sup>, Inês Albino<sup>3</sup>, Lino Ferreira<sup>2,3</sup>, José Brás<sup>4</sup>, Rita Guerreiro<sup>4</sup>, Miguel Tábuas-Pereira<sup>1,2</sup>, Inês Baldeiras<sup>2,5</sup>, Isabel Santana<sup>1,2,5</sup> and João Sargento-Freitas<sup>1,2,3,5\*</sup>

<sup>1</sup>Department of Neurology, Centro Hospitalar e Universitário de Coimbra, Coimbra, Portugal, <sup>2</sup>Faculty of Medicine, University of Coimbra, Coimbra, Portugal, <sup>3</sup>Centre for Neuroscience and Cell Biology, University of Coimbra, Coimbra, Portugal, <sup>4</sup>Department of Neurodegenerative Science, Van Andel Institute, Grand Rapids, MI, United States, <sup>5</sup>Centre for Innovative Biomedicine and Biotechnology (CIBB), University of Coimbra, Coimbra, Portugal

The existence of a selective blood-brain barrier (BBB) and neurovascular coupling are two unique central nervous system vasculature features that result in an intimate relationship between neurons, glia, and blood vessels. This leads to a significant pathophysiological overlap between neurodegenerative and cerebrovascular diseases. Alzheimer's disease (AD) is the most prevalent neurodegenerative disease whose pathogenesis is still to be unveiled but has mostly been explored under the light of the amyloid-cascade hypothesis. Either as a trigger, bystander, or consequence of neurodegeneration, vascular dysfunction is an early component of the pathological conundrum of AD. The anatomical and functional substrate of this neurovascular degeneration is the BBB, a dynamic and semi-permeable interface between blood and the central nervous system that has consistently been shown to be defective. Several molecular and genetic changes have been demonstrated to mediate vascular dysfunction and BBB disruption in AD. The isoform  $\epsilon 4$  of Apolipoprotein E is at the same time the strongest genetic risk factor for AD and a known promoter of BBB dysfunction. Low-density lipoprotein receptor-related protein 1 (LRP-1), P-glycoprotein, and receptor for advanced glycation end products (RAGE) are examples of BBB transporters implicated in its pathogenesis due to their role in the trafficking of amyloid- $\beta$ . This disease is currently devoid of strategies that change the natural course of this burdening illness. This success may partly be explained by our misunderstanding of the disease pathogenesis and our inability to develop drugs that are effectively delivered to the brain. BBB may represent a therapeutic opportunity as a target itself or as a therapeutic vehicle. In this review, we aim to explore the role of BBB in the pathogenesis of AD including the genetic background and detail how it can be targeted in future therapeutic research.

## KEYWORDS

blood-brain barrier, nanomaterials, Alzheimer's disease, neurodegenerative diseases, amyloid clearance, genetic targeting

## 1. Introduction

Neural activity and blood flow are intertwined in a relationship that can be summarized as neurovascular coupling. The immediate increase in cerebral blood flow allows for prompt oxygen and glucose delivery to brain areas that are selectively being activated (Freygang and Sokoloff, 1959; Cox et al., 1993; Chaigneau et al., 2003). This unique and sophisticated mechanism compensates for the lack of energy reserves in the brain (Iadecola, 2017). Whenever there is an imbalance between the energy demands of neural tissue and the blood delivery either a complete flow interruption (such as in stroke) or a more subtle and chronic insufficiency, there is a brain injury and cognitive impairment (Iadecola, 2013, 2017). Deficient blood flow may also lead to the accumulation of toxic waste products such as amyloid  $\beta$  (A $\beta$ ) and tau (Tarasoff-Conway et al., 2015; Iadecola, 2017). The Italian physiologist Mosso first showed this intimate relationship between blood and brain activity in 1878. He demonstrated that brain pulsations in the right prefrontal cortex of a subject with a skull defect rose when he performed an arithmetic task (Raichle and Mintun, 2006). One century later, Lassen et al. (1978) showed an increase in cerebral blood flow in the contralateral sensory-motor cortex and the supplementary motor area produced by hand movement, heralding the functional brain imaging era.

We now know that at the crossroads of brain and blood, there is the neurovascular unit (NVU), a concept formalized in 2001 amongst the first Stroke Progress Review Group meeting of the National Institute of Neurological Disorders and Stroke of the National Institute of Health. NVU offered a view that was opposed to the rigid separation between neurodegenerative diseases, the commonest being Alzheimer's disease (AD), and cerebrovascular diseases (Iadecola, 2017).

The anatomical substrate of this functional brain-vascular unit is the blood-brain barrier (BBB) which was described first-hand by Paul Ehrlich in 1885 (Khatri et al., 2012) and Dyrna et al. (2013). The neurovascular contact changes throughout the cerebrovascular tree. On the pial surface, there is a thick vascular muscle cell layer, subarachnoid space, and autonomic and sensory nerve fibers around the pial arterioles. Penetrating arterioles enter the parenchyma but are separated from it by a perivascular space. In the parenchyma and at a capillary level, perivascular space disappears, and pericytes and basement membrane surround endothelial cells forming the BBB as we know it (Iadecola, 2017).

The BBB is a dynamic interface that regulates the cellular communication between neural tissues and the blood and its constituents. It acts as a selective semipermeable barrier that controls the transport of substances to and from the central nervous system, serving as a key player in neural homeostasis. The blood is separated from CNS by brain endothelial cells separated by tight junctions, adherens junctions, and gap junctions; pericytes; the foot processes of astrocytes, and the basement membrane composed of extracellular matrix components. Two main transport pathways occur within BBB: transcellular *via* endothelial used by the vast majority of the molecules which can be active (dependent on energy) or passive; and paracellular *via* passive diffusion through tight junctions.

The ubiquity and importance of BBB in CNS physiology also translate to how it is also impaired in almost every neurological

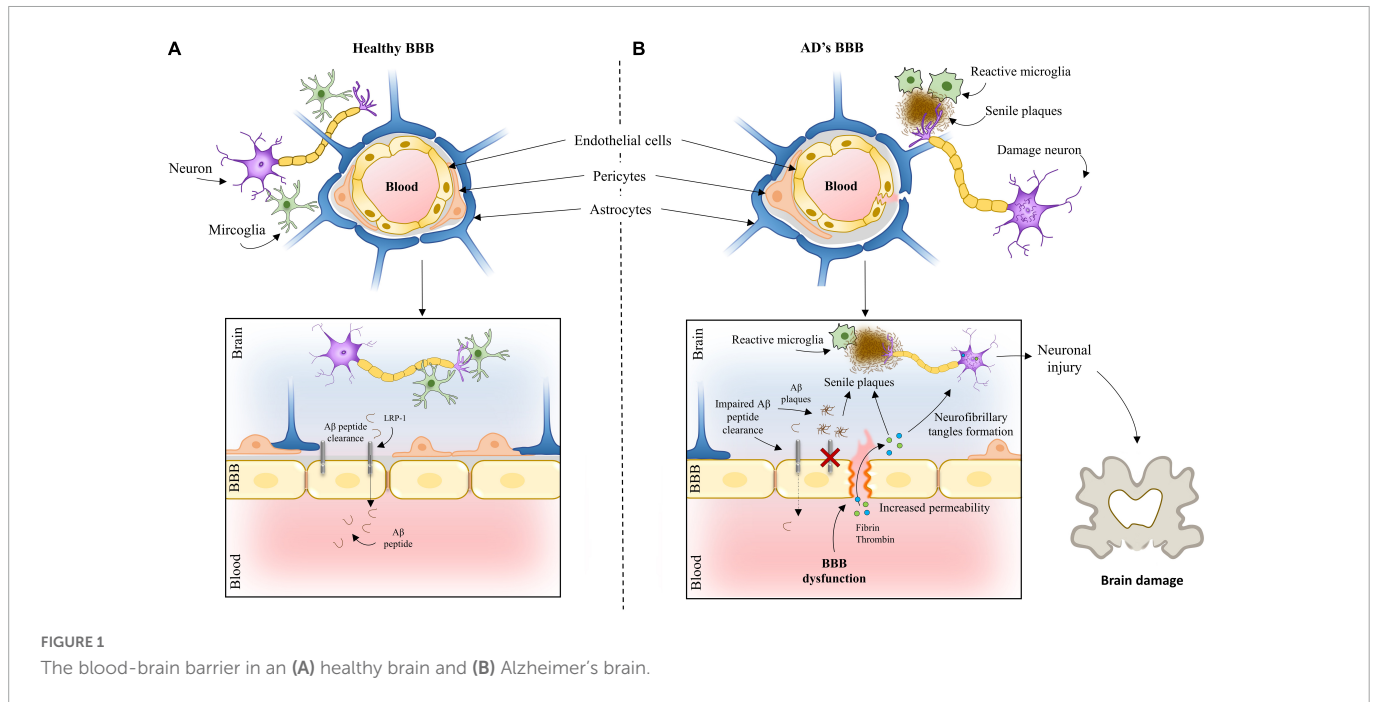
condition. Such is the case of the most common cause of dementia, AD. AD affects more than 30 million people worldwide, a number that is expected to increase dramatically in the foreseeable future (Winblad et al., 2016). To date, intracellular hyper-phosphorylated tau protein accumulation (neurofibrillary tangles) and extracellular A $\beta$  deposition (senile plaques) in brain parenchyma is considered the central neuropathological hallmarks of the disease (Selkoe and Hardy, 2016). However, pathogenesis is still not fully understood, and it is unclear whether these protein abnormalities are causative or rather incidental changes in the disease. Nevertheless, it is generally accepted that both proteins play a key role in disease pathogenesis with A $\beta$  acting upstream of tau (Bloom, 2014) with other hypotheses building on and extending this to explain other aspects of the disease (Calsolaro and Edison, 2016; De Strooper and Karran, 2016; Goetzl and Miller, 2017).

A $\beta$  deposition seems to be a critical pathological trigger in AD and disruption of BBB leads to increased vascular permeability, allowing the entrance and/or hampering the clearance of toxic molecules that can trigger inflammatory and immune responses and, ultimately, neurodegeneration (Iadecola, 2013; Kisler et al., 2017; van Dyck, 2018). One such pathologic protein whose normal clearance is dependent on a healthy BBB is the 42 amino acid A $\beta$  peptide (A $\beta$ 42), considered the major toxic A $\beta$  in AD. Not surprisingly, BBB dysfunction leads to A $\beta$  deposition by disrupting its transporters (Huang et al., 2020; Wang et al., 2021). Moreover, there is experimental evidence that a disrupted BBB promotes its production from the amyloid precursor protein (APP) through the activation of the amyloidogenic pathway where APP is cleaved in sequence by  $\beta$ - and  $\gamma$ -secretase (Ridler, 2018; Wang et al., 2018).

Several studies have demonstrated BBB breakdown and dysregulation in AD (Montagne et al., 2017). **Figure 1** presents BBB in a healthy brain and AD. Whether it is a cause or consequence of the disease has been a matter of debate. Available evidence points to BBB breakdown as an early event preceding AD pathology (Iturria-Medina et al., 2016). These findings have been supporting the vascular hypothesis of AD. First published in 1993 by de la Torre et al. this hypothesis postulates that neurodegeneration is the consequence of a series of pathogenic pathways originating in blood vessels (de la Torre and Mussivan, 1993). More recently, Zlokovic (2011) proposed the two-hit vascular hypothesis of AD. According to this hypothesis, impairment of blood vessels leads to BBB dysfunction and initiates a cascade of events leading to neuronal dysfunction (hit one). BBB dysfunction reduces A $\beta$  clearance and increases its production inducing accumulation of this peptide, amplifying neuronal dysfunction, and accelerating neurodegeneration (hit two).

Blood-brain barrier has been emerging as a central hub for AD pathogenesis, presenting as a potential target to treat AD. Understanding its dysfunctional role in AD pathogenesis would be paramount for AD biology clarification and would probably give insights into other brain disorders.

In this review, we will detail pathogenic and therapeutic links between AD and BBB offering a comprehensive and integrative view that includes the genetic landscape of AD and anticipates future research and treatment.



## 2. Fundamental blood-brain barrier concepts in the context of Alzheimer's disease

Alzheimer's disease pathogenesis can be viewed in light of two distinct paradigms: the amyloid-cascade hypothesis and the vascular hypothesis. The first hypothesis states that A $\beta$  deposition is the initial step in AD pathogenesis. Alternatively, the vascular hypothesis states that damage to blood vessels is the initial insult leading to neuronal injury and A $\beta$  accumulation.

The BBB is responsible for the clearance of 80–85% of AD-related forms of A $\beta$  in the brain (Xie et al., 2013). Increasing evidence points to BBB dysfunction as an early biomarker of neurodegeneration, including AD (Montagne et al., 2015; Sweeney et al., 2018). Neuroimaging tools (Protas et al., 2013; Bailly et al., 2015; Montagne et al., 2015), *in vivo* disease animal models (Niwa et al., 2002) and post-mortem human studies (Salloway et al., 2002; Wu et al., 2005; Ryu and McLarnon, 2009; Bell et al., 2010; Hultman et al., 2013; Sengillo et al., 2013; Zenaro et al., 2015; Halliday et al., 2016) have allowed identifying key functional and molecular changes occurring during AD across different regions of the brain. Particularly, the development of advanced brain imaging techniques increased the detectability of vascular changes and hemodynamic responses (Kisler et al., 2017). Molecular ligands, such as A $\beta$  and tau, but also the glucose and P-glycoprotein 1 analog, 18F-fluorodeoxyglucose and 11C-verapamil, allowed to follow the activity of BBB transporters and receptor proteins *in vivo* (Protas et al., 2013; Deo et al., 2014), providing mechanistic insights into the role of vascular dysfunction in neurodegenerative diseases. BBB breakdown was confirmed by dynamic contrast-enhanced MRI studies showing increased leakage of gadolinium in patients with early AD, in several gray and white matter regions (Montagne et al., 2016). Evidence of BBB disruption in AD has also been confirmed by the quantification of the accumulation of blood-derived neurotoxic proteins, such as fibrinogen, thrombin, albumin and IgG in the cortex and hippocampus of post-mortem

tissues (Ryu and McLarnon, 2009). Interestingly, often these proteins colocalize with deposits of A $\beta$ . The identification of peripheral macrophages (Hultman et al., 2013) and neutrophils (Zenaro et al., 2015) in the brain of individuals with AD also suggest a breakdown of the BBB, leading to increased influx of peripheral immune cells into the brain. Other findings indicative of endothelial degeneration in AD include reduced capillary length, reduced expression of tight junction proteins and capillary basement membrane changes (Salloway et al., 2002; Halliday et al., 2016). At cellular level, clinical studies have revealed a reduction in pericyte number and coverage in the cortex and hippocampus of AD individuals (Sengillo et al., 2013). Importantly, it has been demonstrated that a deficiency in brain pericytes in murine central nervous system lead to vascular damage through a reduction in brain microcirculation as well as *via* BBB breakdown with toxic extravasation of plasma proteins (Bell et al., 2010).

Several molecular changes have been linked to the vascular dysfunction and disruption of the BBB in AD. Apolipoprotein E (APOE) is one of the genes with a critical role in neurovascular dysfunction and is the strongest genetic risk factor for AD. APOE  $\epsilon$ 4 homozygotes with AD have thinner capillary basement membranes (Salloway et al., 2002) and increased leakage of plasma proteins into the cortex (Salloway et al., 2002). It has been found that APOE  $\epsilon$ 4 leads to BBB breakdown, decreased cerebral blood flow, neuronal loss and behavioral deficits independently of A $\beta$  (Montagne et al., 2021). Particularly, the activation of cyclophilin A-matrix metalloproteinase 9 (CypA-MMP-9) pathway in pericytes in APOE  $\epsilon$ 4 knock-in mice was found to lead to matrix metalloproteinase 9 mediated degradation of tight junction proteins, namely, through ZO-1 and occludin (Montagne et al., 2021). This pathway is also activated at the BBB endothelial cells and pericytes in APOE  $\epsilon$ 4 AD carriers as shown by post-mortem tissue (Halliday et al., 2016) analyses and cerebrospinal fluid analyses (Montagne et al., 2020).

The pathogenesis of AD has also been associated with a decreased expression of GLUT1, the major glucose transporter in the BBB. Several studies reported that GLUT1 levels are significantly reduced

in brain microvessels in AD (Simpson et al., 1994). Moreover, changes in glucose metabolism were shown to occur before neuronal dysfunction in humans (Protas et al., 2013) and in transgenic AD models (Niwa et al., 2002), as evaluated by measuring the radiolabeled glucose analogue, 18F-fluoro-2-deoxyglucose by positron emission tomography. A decreased glucose uptake in the hippocampus, parietal cortex and posterior cingulate cortex has been observed in early AD (Bailey et al., 2015) as well as in individuals at increased genetic risk of AD (Protas et al., 2013). In line with this, it has been demonstrated that a deficiency in this transporter in transgenic mice overexpressing human APP can exacerbate neurovascular dysfunction in AD by generating a series of parallel pathogenic mechanisms in the cerebral microcirculation, namely, a significant reduction in the expression of tight junctions, capillary degeneration, neurovascular uncoupling, BBB breakdown, decreased brain perfusion and impaired A $\beta$  clearance (Winkler et al., 2015). Aberrant expression of other transporters at the BBB has also been implicated in the pathogenesis of AD, such as receptors directly involved in the transport of A $\beta$  across the BBB. This includes low expression of low-density lipoprotein receptor-related protein 1 (LRP-1), a major clearance receptor for A $\beta$  at the BBB (Shibata et al., 2000). Pharmacological inhibition and genetic knock-down of LRP-1 in APP/PS1 mouse model of AD accelerated brain accumulation of A $\beta$  and exacerbated A $\beta$  deposition as amyloid plaques and cerebral amyloid angiopathy without affecting A $\beta$  production (Kanekiyo et al., 2012). Moreover, the metabolism and transport of A $\beta$  across the BBB are mediated differently by the different APOE isoforms through receptor-mediated transcytosis. APOE  $\epsilon$ 2 and APOE  $\epsilon$ 3 mediate rapid A $\beta$  clearance by interacting with LRP-1, whereas APOE  $\epsilon$ 4 has a higher affinity to very low-density lipoprotein receptor (VLDLR) resulting in slower clearance of A $\beta$  and increased accumulation in the brain (Deane et al., 2008). P-glycoprotein (P-gp), an ATP-binding cassette transporter highly expressed on the luminal side of the BBB, is involved in the clearance of A $\beta$  from the brain, promoting the export of A $\beta$  in combination with LRP-1. The expression of this transporter is decreased in aged individuals and in AD (Chiu et al., 2015). This decline in protein expression also translates into reduced protein function. PET studies revealed that the clearance of the labeled P-gp substrate (R)-[11C]-verapamil is decreased in individuals with mild to moderate AD (van Assema et al., 2011). Besides LRP-1 and P-gp, the levels of the receptor for advanced glycation end products (RAGE) are also altered in AD (Miller et al., 2008). This receptor transports A $\beta$  in opposite direction to LRP-1 mediating the re-entry of circulating A $\beta$  into the brain and thereby promoting neurovascular inflammation (Deane et al., 2003). In addition, an *in vitro* study showed that A $\beta$  can increase the expression of RAGE, thus promoting a positive feedback loop (Wan et al., 2015). Importantly, the interaction of A $\beta$  with RAGE was shown to trigger the disruption of tight junctions *via* the expression of MMP-2 and MMP-9 and *via* intracellular Ca<sup>2+</sup>-calcineurin signaling (Kook et al., 2012).

The central nervous system was previously thought to be an immunologic sanctuary due to its BBB, acting independently in protecting the brain from disease. However, this ideology has been abandoned and the immune system is now considered an important player in AD pathology (Jevtic et al., 2017). Microglia are the main immune cells in the CNS. They are involved in its active surveillance and become activated upon brain injury or pathogen invasion. In the AD brain, microglia are activated around A $\beta$  deposits inducing an innate immune response dominated by

the release of pro-inflammatory cytokines and chemotactic factors that may act on peripheral immune cells. How these cells interact and contribute to AD pathology remains elusive. Although some are recruited to act locally in the brain, others may act from a distance (Wyatt-Johnson and Brutkiewicz, 2020). The initial microglia protective role in facilitating the clearance of A $\beta$  results in uncontrolled neuroinflammation with chronic activation promoting the disintegration of the BBB (Zenaro et al., 2017).

A $\beta$  deposition in the vasculature also leads to the release of proinflammatory cytokines and to oxidative stress that contributes to vascular dysfunction in AD. A $\beta$  as well as its lipid carrier ApoE (encoded by the homonymous susceptibility gene) are vasculopathic, proinflammatory, impair A $\beta$  degradation by microglial cells and astrocytes, impede efficient clearance and induce a degeneration of endothelial cells which is independent of other conditions (Kurz et al., 2021). A $\beta$  peptides trigger vasoactivity activating pericytes and vascular smooth muscle cells further impairing BBB function (Fisher et al., 2022). For example, in a rodent model of AD, reactive oxygen species trigger the release of endothelin-1 that elicits pericyte contraction by acting on endothelin-A receptors, thus causing capillary constriction and reducing cerebral blood flow. Cumulative evidence suggests that vascular inflammation occurs during AD with higher levels of adhesion molecules associated with endothelial cell activation such as VCAM-1, ICAM-1, E-selectin, and P-selectin found in plasma samples from AD patients (Nielsen et al., 2007; Zuliani et al., 2008). A recent study contributed to the clarification of the role of vascular inflammation in BBB permeability (Propson et al., 2021). Briefly, activation of the signaling pathway involving the active peptide of complement component (C3a) and its receptor (C3aR) has been shown to modulate VCAM-1 expression, leading to an inflammatory transition in aged and transgenic mice. *In vitro* analyses identified Ca<sup>2+</sup> as a downstream effector of C3a/C3aR signaling and a functional mediator of vascular endothelial cadherin junction and barrier permeability.

Tau protein has also been showing an important role in regulation of the BBB. In physiological conditions, tau plays an important role in assembly and stabilization of microtubules, which are significant structural elements in cells of the CNS. In tauopathies like AD, tau undergoes different post-translational modifications, like hyperphosphorylation or truncation, altering its conformation, and aggregating in the form of insoluble neurofibrillary tangles in neurons and extracellular space. The effect of accumulated tau on BBB is mediated through the activation of glial cells which is associated with a pronounced inflammatory response, causing structural and functional changes. This process increases the formation of tau protein hyperphosphorylation, further promoting the formation of neurofibrillary tangles, giving rise to another deleterious feed-forward loop (Michalicova et al., 2017, 2020).

### 3. Blood-brain barrier as a target in Alzheimer's disease

#### 3.1. Potential molecular targets for blood-brain barrier targeting in Alzheimer's disease

As previously mentioned, both influx and efflux A $\beta$  transporters seem to be dysregulated in AD and have shown to be key players in A $\beta$

accumulation. In this context, these transporters have been presented as potential therapeutic targets for AD. RAGE blockage have showed to slow down A $\beta$  pathology and lower the rate of cognitive decline in animal models (Bell et al., 2012). However, the phase III clinical trial with a RAGE inhibitor (NCT02080364) was terminated due to lack of efficacy. Statins have been shown to upregulate LRP-1 at the BBB and reduce A $\beta$  brain levels *in vitro* models. Although clinical trials have failed to show their efficacy, a recent reanalysis of these studies suggested that these drugs may benefit AD patients with potentially greater therapeutic efficacy in those homozygous for the APOE  $\epsilon$ 4 allele (Storck and Pietrzik, 2017), though it is not known whether the modulation of LRP-1 plays any role. *In vitro* studies support the role of P-gp in removing amyloid proteins (McCormick et al., 2021) and *in vivo* studies showed that prevention of P-gp degradation lowers A $\beta$  brain levels (Hartz et al., 2018). However, to our knowledge, no LRP-1 or P-gp modulators have been clinically tested in AD yet.

The pathogenesis of AD has also been associated with a decreased expression of GLUT1, the major glucose transporter in the BBB. Liraglutide, a GLP1 analog, has showed to delay memory decline in a mouse model of AD (Hansen et al., 2015). Recently, it was demonstrated that the same drug slowed down memory decline in a group of patients with obesity and type 2 diabetes (Vadini et al., 2020) and more recently, GLP1 receptor agonists were shown to prevent

glucose transport decline through BBB in AD patients, although no conclusions were drawn on cognitive decline (Gejl et al., 2016). Although little is known about the specific mechanism, it is thought that they could act by restoring the levels of GLUT1 at the BBB (Gejl et al., 2017). Also, a recent study pulling out data from randomized controlled trials and a nationwide cohort concluded that dementia incidence was reduced in patients with type 2 diabetes treated with GLP1 receptor agonists (Nørgaard et al., 2022). Based on these results, a phase IIb clinical trial (NCT01843075) demonstrated liraglutide improved cognitive function and MRI volume in patients with mild to moderate AD (Edison et al., 2021). Taken together, these data have been supporting GLP1 analogues as potential disease modifying therapy for AD. A phase III randomized controlled trial evaluating semaglutide in people with early AD is ongoing (NCT04777396).

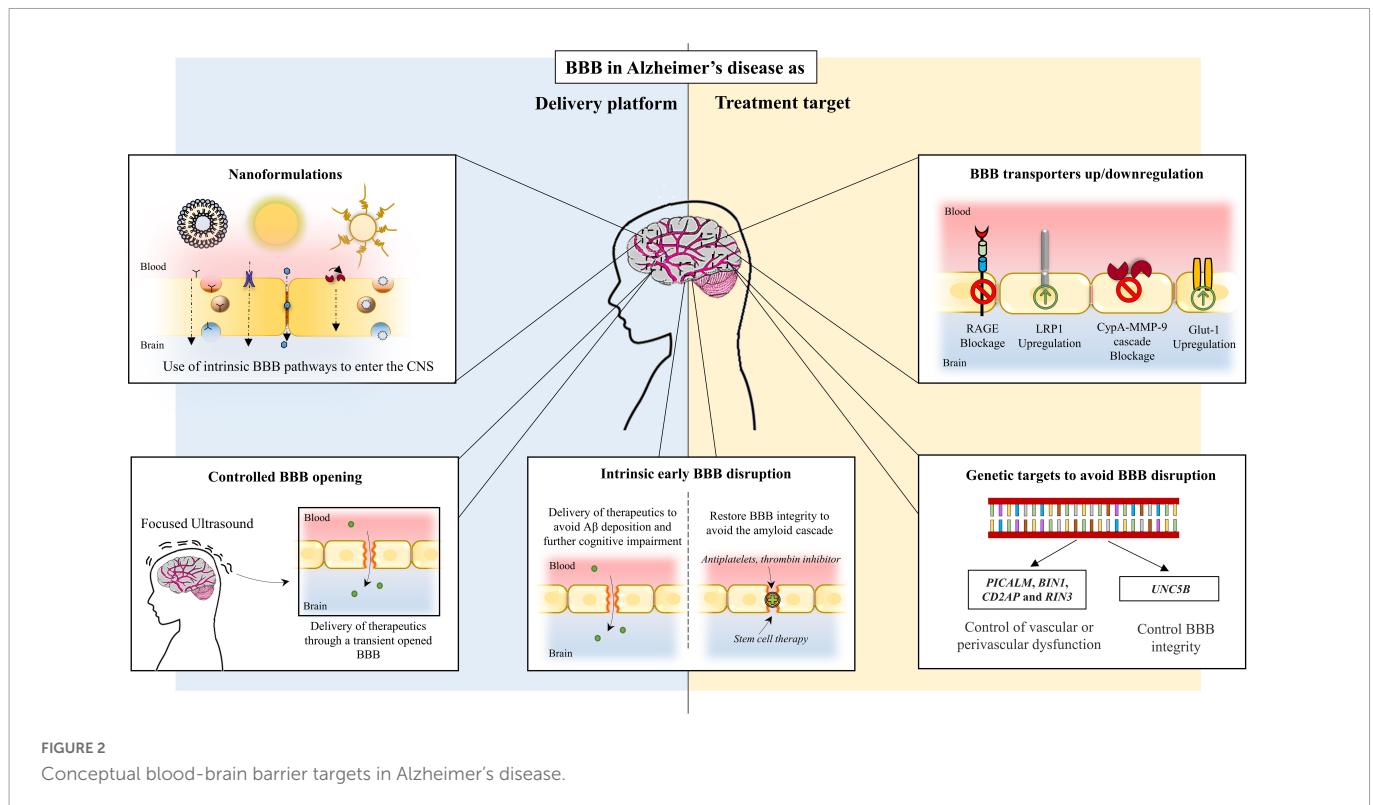
Lastly, inhibition of CypA-MMP-9 cascade, a pathway involved in BBB breakdown, in addition to repairing the BBB, also slowed down and reversed neurodegenerative changes in animal models (Bell et al., 2012). **Table 1** presents BBB transporters/pathways implicated in AD and how they can be targeted. **Figure 2** outlines BBB targeting strategies in AD.

Despite positive outcomes from pre-clinical studies *in vitro* and *in vivo*, the scarcity of clinical trials emphasizes the necessity for additional research to bring these discoveries from the laboratory to the patient bedside.

TABLE 1 Blood-brain barrier targets in Alzheimer's disease.

| Target    | Role  | Regulation in AD | Therapeutic approach | Current status   | References   |
|-----------|---|------------------|----------------------|--|--|
| LRP1      | A $\beta$ major efflux transporter across the BBB | Downregulated    | Agonism/upregulation | <i>In vitro</i> studies with statins show upregulation of LRP1 at the BBB and consequently reduction of A $\beta$ brain levels<br>Reanalysis of clinical trials with statins indicates statins benefit, especially in APOE $\epsilon$ 4 homozygous   | Shinohara et al., 2010; Geifman et al., 2017   |
| P-gp      | A $\beta$ efflux transporter across the BBB       |                  |                      | <i>In vitro</i> studies support the role of P-gp in removing amyloid proteins<br><i>In vivo</i> studies show lower A $\beta$ brain levels preventing P-gp degradation  | Hartz et al., 2018; McCormick et al., 2021   |
| RAGE      | A $\beta$ influx transporter across the BBB       | Upregulated      | Antagonism/blockage  | Animal models show reduced brain A $\beta$ levels and a lower rate of cognitive decline using either antagonists or anti-RAGE antibodies<br>A phase III clinical trial of a RAGE inhibitor was terminated by lack of efficacy  | Deane et al., 2012; Batkulwar et al., 2018   |
| GLUT1     | Glucose major transporter across the BBB          | Downregulated    | Agonism/upregulation | Animal models show GLP1 receptor agonists delay memory decline<br>GLP1 receptor agonists slow down memory decline in patients with type 2 diabetes and prevent glucose transport decline through BBB in AD patients<br>A phase IIb clinical trial evaluating a GLP1 analog demonstrated improved cognitive function and MRI volume<br>A phase III clinical trial evaluating a GLP1 analog is ongoing | Hansen et al., 2015; Gejl et al., 2016; Vadini et al., 2020; Edison et al., 2021<br>EVOKE, NCT04777396 |
| CypA-MMP9 | BBB degrading pathway                             | Activated        | Blockage             | In animal models pharmacologic and genetic inhibition slow down and reverse neurodegenerative changes  | Bell et al., 2012  |

AD, Alzheimer's disease; LRP1, low-density lipoprotein receptor-related protein; A $\beta$ , amyloid- $\beta$ ; BBB, blood-brain barrier; APOE, apolipoprotein E; P-gp, P-glycoprotein; RAGE, receptor for advanced glycation end products; GLUT1, glucose transporter 1; GLP1, glucagon-like peptide-1; CypA, cyclophilin A; MMP9, matrix metalloproteinase-9.



### 3.2. Potential genetic targets for blood-brain barrier targeting in Alzheimer's disease

Although the genetic underpinnings of BBB dysfunction are relatively understudied, genetic data has given a number of possible links between BBB dysfunction and AD. For instance, APOE  $\epsilon$ 4, the strongest genetic risk factor for AD (Farrer et al., 1997), has also been shown to lead to brain blood dysfunction and cognitive decline, independently of AD pathology (Montagne et al., 2020). This supports a link between BBB dysfunction and AD, but also suggests that BBB dysfunction may add cognitive decline independently. More recently, it has been shown that 30 of the top 45 genes that have been linked to AD risk by genome-wide association studies (GWAS) are expressed in the human brain vasculature, suggesting that vascular and perivascular systems are highly involved in AD pathogenesis (Yang et al., 2022). Genetic variants such as *PICALM*, *BIN1*, *CD2AP*, and *RIN3* have been linked to AD in GWAS and seem involved in BBB A $\beta$  transcytosis pathways (Juil Rasmussen et al., 2019). A recent study has shown these variants to increase the risk of AD and vascular dementia, suggesting that there is a shared mechanism, possibly related to vascular or perivascular dysfunction (Juil Rasmussen et al., 2019).

Several monogenic mendelian diseases leading to brain disorders and cognitive impairment appear to originate in individual cell types of the neurovascular unit. Some of the genes are linked to specific roles in BBB development, function, and regulation (Zhao et al., 2015) but have also been linked with AD associated changes, such as *OLCN* (Romanitan et al., 2007), *COL4A1* (Pang et al., 2019; Xiao et al., 2021), *NOTCH3* (Sassi et al., 2018), *CSF1R* (Sassi et al., 2018), *TREM2* (Guerreiro et al., 2013), and *TYROBP* (Audrain et al., 2021). Furthermore, there is some evidence of BBB dysfunction

happening in a number of genetically determined degenerative disorders, such as AD, but also Parkinson's disease, Huntington's disease and amyotrophic lateral sclerosis (Katt et al., 2019).

Other studies such as those enumerated in Table 2 have identified other potential genetic links between BBB regulation and development and AD pathogenesis, providing additional potential drug targets. For example, GLUT1 is the most important energy carrier of the brain across the BBB, and shown to be critical in BBB development (Zheng et al., 2010). It has been reported that GLUT1 reductions exacerbate AD pathology (Winkler et al., 2015). Although the syndromes currently associated with *GLUT1* pathogenic variants start at a very young age (Koch and Weber, 2019), small-effect changes with low frequency in the population can potentially be associated with the risk of developing AD. This is further supported by some genetic data in drosophila models (Shulman et al., 2011). Likewise, *MFSD2A*, another major transporter with a key role in modulating transcytosis to regulate the BBB (Andreone et al., 2017), expression is reduced in AD patients (Sánchez-Campillo et al., 2019).

A GWAS (Lee et al., 2022) has looked into *FML2*, a formin-related protein expressed in astroglial cells that regulates glia and vasculature interaction and partakes in the homeostasis and clearance of amyloid  $\beta$ . It has shown that *FML2* is overexpressed in AD and in cerebrovascular pathology independently. Expression of *FMNL2* increases in the presence of vascular risk factors among individuals with AD, and it appears that this gene plays a significant role in the progression of AD pathology when both conditions are present.

Several other transporters may also link both disorders. *PRF1*, for example, which has been linked with BBB dysfunction (Willenbring et al., 2016), has also been linked with amyloid processing, being shown to promote amyloid-beta internalization in neurons (Lana et al., 2017). Recently, *UNC5B* has been suggested to control BBB integrity (Boyé et al., 2022). This gene is of the same family of *UNC5C*, which has been repeatedly linked with AD. Another link between AD

and BBB dysfunction comes from a model of multiple sclerosis, where *FOXO1* downregulation has also been linked to BBB changes (Mora et al., 2020). Interestingly, *FOXO1* upregulation has been shown to reduce A $\beta$  production and tau phosphorylation *in vitro* (Zhang et al., 2020).

This data gives support to the idea that BBB dysfunction is an important step in AD pathophysiology, possibly by facilitating known mechanisms but perhaps also by adding additional damage to AD patients' brains by other mechanisms.

## 4. Blood-brain barrier as a therapeutic vehicle in Alzheimer's disease

One of the major limitations for the development of AD treatments, as for the vast majority of CNS disorders, is the design of a system able to penetrate the selective nature of the BBB (Srivastava et al., 2021). As already described in this report, the BBB is highly sealed and selective and hence avoids the entrance of unwanted compounds into the brain (Bernardo-Castro et al., 2020) therefore, finding a way to overcome it is a key for AD treatment.

Despite its efficient barrier function, there are several transport routes that allow a selective exchange of compounds through the BBB (Bernardo-Castro et al., 2020). Taking advantage of these intrinsic mechanisms will permit the delivery of the desired therapeutic compounds into the brain. Nonetheless, one of the major problems of therapeutic compounds designed to cross the BBB is that they are unable to reach the key targets in the brain without losing

bioavailability, solubility, stability or efficacy. To avoid this, the most highlighted strategy to improve AD treatment is the use of nanomaterials able to enhance the permeation of therapeutic compounds through the BBB to reach the desired target without losing its properties (Alphonsus and Rodseth, 2014). As such, the highly selective feature of the BBB may be exploited as a therapeutic vehicle to specifically deliver therapeutic compounds that directly target AD pathological features. Figure 2 summarizes pathways of BBB delivery in AD.

### 4.1. Nanoformulations for Alzheimer's disease

Nanomaterials for targeted drug delivery across the BBB have been extensively studied in the medicine field, particularly in AD (Faiyaz et al., 2021). In order to cross effectively the BBB and target directly the AD brain, nanoformulations should have: stability in blood circulation, proper surface modification, amyloid direct targeting that does not interfere with BBB targeting (multifunctionality) and ability to release at the target site (Tosi et al., 2019).

A vast variety of nanotechnology-based approaches fulfilling these characteristics have been and are currently being adapted to surpass the BBB in AD (Ordóñez-Gutiérrez and Wandosell, 2020; Srivastava et al., 2021; Chopra et al., 2022). Some relevant examples of AD nanoformulations include lipoprotein-based, polymers or metallic nanoparticles (Karthivashan et al., 2018; Bilal et al., 2020; Faiyaz et al., 2021).

TABLE 2 Genetic links between Alzheimer's disease and/or cognition and blood-brain barrier dysfunction.

| Gene                         | Role/Link   | References   |
|------------------------------|---|--|
| APOE $\epsilon$ 4            | Both the strongest genetic risk factor of AD and associated with BBB dysfunction irrespective of AD pathology   | Farrer et al., 1997; Montagne et al., 2020           |
| PICALM, BIN1, CD2AP and RIN3 | BBB A $\beta$ transcytosis pathways and associated with AD in GWAS  | Juul Rasmussen et al., 2019                          |
| OCLN                         | Occludin overexpression in AD and VD  | Romanitan et al., 2007                               |
| COL4A1                       | Component of basement membrane whose defect may lead to cortical malformations through vascular damage  | Pang et al., 2019; Xiao et al., 2021                 |
| NOTCH3                       | Dysfunction transmembrane receptor expressed in vascular smooth muscle cells and pericytes that may promote AD susceptibility by increasing the risk for small vessel disease or leukoencephalopathy. | Sassi et al., 2018                                   |
| CSF1R                        | Colony stimulating factor that regulates macrophages, enhances BBB permeability and is overexpressed in cortex with A $\beta$ pathology   | Sassi et al., 2018                                   |
| TREM2                        | Triggering receptor expressed on myeloid cells 2 protein expressed in microglia correlated with BBB integrity and whose variants increase the risk of AD  | Guerreiro et al., 2013                               |
| TYROBP                       | Cytoplasmic adaptor for receptors such as TREM2 that influences microglia – a key component of neurovascular unit – to become diseased and may drive AD   | Audrain et al., 2021                                 |
| GLUT1                        | Glucose transporter across BBB crucial in its development and reduced in AD   | Zheng et al., 2010                                   |
| MFSD2A                       | BBB transporter that modulates transcytosis and is underexpressed in AD   | Andreone et al., 2017; Sánchez-Campillo et al., 2019 |
| PRF1                         | BBB transporter linked with A $\beta$ processing and its internalization in neurons   | Willenbring et al., 2016; Lana et al., 2017          |
| FML2                         | Protein that regulates glia and vasculature interaction and is overexpressed in AD and in cerebrovascular pathology   | Lee et al., 2022                                     |
| UNC5B                        | Netrin receptor that regulates angiogenesis, controls BBB integrity and the same gene family of UNC5C whose mutations predispose to AD  | Boyé et al., 2022                                    |
| FOXO1                        | Transcription factor that influences BBB changes, A $\beta$ production and tau phosphorylation  | Zhang et al., 2020                                   |

AD, Alzheimer's disease; BBB, blood-brain barrier; A $\beta$ , amyloid- $\beta$ ; GWAS, genome-wide association studies; VD, vascular dementia.

The rationale behind these nanotechnology-based approaches is to take advantage of the intrinsic transport strategies of the BBB to efficiently reach brain tissue and target AD's pathological processes. For instance, lipophilic nanoparticles directed toward the brain endothelial cells (BECs) could allow the transport of therapeutic compounds through endocytosis or lipophilic transcellular pathways (Karthivashan et al., 2018). In this context, solid lipid nanoparticles loaded with curcumin (a potent antioxidant, anti-inflammatory compound with anti-A $\beta$  accumulation effects) have shown to efficiently surpass the BBB due to their lipidic nature and to reduce oxidative stress in the hippocampal tissue improving spatial memory in an AD rodent model (Sadegh Malvajerd et al., 2019). Other strategies such as ionized-nanomaterials could take advantage of the negatively charged BECs membrane to surpass the BBB through adsorptive transcytosis. For example, the conjugation of deferasirox (an iron-chelating agent) to cationized human serum albumin showed correct brain uptake through adsorptive transcytosis with attenuated amyloid beta-induced learning deficits in a rat model of AD (Kamaliniya et al., 2015). Another strategy comprises functionalized nanomaterials including liposomes, polymeric or metallic nanocarriers. This strategy relies on receptor-mediated transcytosis and carrier protein-mediated pathways taking advantage of the already existing receptors in the cells surface to transport the therapeutic cargo across the BBB (Karthivashan et al., 2018). A good example of this mechanism is the use of LPR-1 as delivery system across the BBB. Polymeric nanoparticles functionalized with Angiopep-2 (a specific ligand to LPR-1) and loaded with Prussian blue showed efficient BBB crossing and restoration of mitochondrial function along with reduced neurotoxic A $\beta$  aggregation (Zhong et al., 2022). A gold standard in receptor mediated transcytosis is the transferrin receptor (TfR). The TfR is highly expressed in the BBB and has been prove to be functional in the BBB during AD (Bourassa et al., 2019), hence conforming a great candidate for brain delivery in AD. In this context, transferrin-functionalized liposomes loaded with gallic acid where proven to efficiently bypass the BBB through TfR-mediated transcytosis and efficiently decrease the number of A $\beta$  fibrils formed by 56% (Andrade et al., 2022).

Despite all, none of these strategies aiming to a single AD process has achieved the expected results in terms of disease treatment. To this aim, and due to the complex nature of AD and the multifactorial regulation of A $\beta$  aggregation, multitarget nanotherapeutics seem to be a promising strategy to target not only this hallmark but also complementary pathways involved in this disease (Ibrahim and Gabr, 2019). In this context, self-assembled Fmoc-Trp-Fe<sup>2+</sup>-Que NPs have shown successful suppression of A $\beta$  plaques, reduction of reactive oxygen species (ROS) generation and suppression of the neurotoxicity induced by A $\beta$  (Zhu et al., 2022). Furthermore, chondroitin sulfate-selenium NPs have also shown to be very promising as multitarget AD therapy showing reduction in ROS levels and cytoskeleton damage, attenuation of hyperphosphorylation of tau and A $\beta$  aggregation inhibition (Gao et al., 2020).

All in all, nanoformulations present themselves as one of the most promising tools for AD treatment, taking advantage of the selective BBB characteristics and using it as a delivery platform to selectively target the brain. Nonetheless, albeit very promising, its use is limited due to safety concerns and in most cases failure to achieve adequate concentrations of the delivered compounds to the brain tissue (Lipsman et al., 2018). Moreover, BBB transport mechanisms can be altered during neurodegeneration which will, in turn, affect

the delivery of therapeutic compounds and hamper the use of this mechanism as a delivery platform (Wasielewska and White, 2022).

In this context, controlled opening of the BBB has been brought up as an alternative potential mechanism to facilitate paracellular drug delivery into the brain using the BBB as a platform.

## 4.2. Controlled BBB permeability as a therapeutic vehicle

Controlled BBB opening should be transient and selective to avoid unwanted accumulation in the brain and any potential side effects (Han, 2021). Several pre-clinical and clinical studies have studied this controlled opening of the BBB as a way to the brain in the treatment of AD. For instance, mannitol has been used *in vitro* to reversibly open the BBB (Haluska and Anthony, 2004). Nonetheless, focused ultrasound in combination with microbubbles currently constitutes the only truly transient, localized, and non-invasive technique for opening the BBB (Konofagou et al., 2012). Significant progress has been made in the pre-clinical validation and development of focused ultrasound which eventually lead to the initiation of clinical trials examining its application for delivery in AD (Wasielewska and White, 2022). In fact, this technique has been shown to reversibly open BBB in AD patients. A clinical trial investigated BBB opening in the white matter of the superficial dorsolateral prefrontal cortex of AD patients demonstrating that this opening is safe in humans (Lipsman et al., 2018). Hippocampal BBB opening has been also demonstrated safely in a proof-of-concept study that also reported an A $\beta$  decrease after opening (Rezai et al., 2020). In this line, a recent phase I/II trial in early stage AD showed that repeatedly opening the BBB with ultrasound is well-tolerated and may be associated with a reduction of amyloid burden (Epelbaum et al., 2022). Extensive opening of the BBB (above 20 cm<sup>3</sup>) has also been shown safe and potentially beneficial with a potential anti-amyloid effect by itself (Park et al., 2021).

While the potential benefits of BBB opening by itself are still not clear, the proof of safety in transiently opening the BBB of AD patients could additionally allow the delivery of larger molecules such as antibodies or growth factors (Lipsman et al., 2018) that directly target the AD pathology taking advantage of the increased permeability. Nonetheless, BBB opening raised several concerns such as potential brain toxicity due to the non-specific accumulation of neurotoxic substances from the blood that could produce neuronal damage and degenerative changes (Han, 2021).

Interestingly, BBB disruption has been reported to occur in AD even before the onset of hippocampal atrophy (Montagne et al., 2015; Sweeney et al., 2018) and hence the evidence of a naturally permeable BBB in the early phases of the disease could allow the delivery of therapeutic compounds even at the early stages of AD without invasive measures.

## 4.3. Integrating blood-brain barrier in the therapeutic landscape of Alzheimer's disease

Currently, no disease-modifying therapies for AD are approved by the European Medicines Agency (EMA). In the USA, Aducanumab (Aduhelm<sup>TM</sup>) has been given Food and Drug



Agency (FDA) approval under the agency's accelerated approval pathway for AD treatment, meaning a post-approval trial has to demonstrate clinical benefit to keep the approval. Aducanumab, a human IgG1 anti-A $\beta$  monoclonal antibody selective for A $\beta$  aggregates, has become the first FDA-approved drug to reduce A $\beta$  levels, a decision that was not devoid of criticism among the scientific community (Tampi et al., 2021). More recently, another accelerated approval has been granted by FDA to Lecanemab (Leqembi<sup>TM</sup>) after the results of an 18-month, phase 3 trial that involved 1795 patients with early AD. This humanized IgG1 monoclonal antibody which selectively binds to large, soluble A $\beta$  protofibrils has shown a reduction of A $\beta$  in early AD patients and less decline in measures of cognition and function with modest effect sizes (van Dyck et al., 2022; Gandy and Ehrlich, 2023). Other A $\beta$ -targeted monoclonal antibody therapies have failed to show positive clinical outcomes. Several reasons have been pointed out for such failure one being poor antibody brain penetration (< 0.1%) (van Dyck, 2018; Bajracharya et al., 2021; Nehra et al., 2022). In fact, it was only in the high dose intervention arm of the Aducanumab EMERGE trial that clinical benefit was found, suggesting the need of higher accumulated doses of the antibody to compensate for the low penetrance (Schneider, 2020; Leinenga et al., 2021). As pointed above, ultrasound has the potential to open BBB (Leinenga et al., 2016) constituting an option to alternatively enhance the clearance of amyloid by facilitating para and transcellular transport across this barrier (Pandit et al., 2020) and to facilitate drug delivery to the central nervous system. That is why, just recently, Leinenga et al. (2021) have investigated separately Aducanumab and scanning ultrasound in an animal model, showing that each one of these strategies has a comparable potential to reduce plaque burden. This suggests that the latter may be a treatment option in AD and hypothesizes that both should be studied in a combination trial as an approach to increase the brain levels of Aducanumab and to treat AD. As mentioned in a study cited above, magnetic resonance-guided focused ultrasound was able to open transiently and non-invasively the BBB in 5 patients with A $\beta$  AD (Lipsman et al., 2018). A non-eloquent brain region was targeted and this technique was not complemented with any treatment which may soon be tested.

Other strategies to increase the delivery of drugs across BBB, particularly monoclonal antibodies, that are currently under development include bi-specific antibodies (a group that included the above-mentioned LRP-1 and other receptor-mediated transporters), nanoparticles (including liposomes, metallic nanoparticles and dendrimers), exosomes, viral vectors (Bajracharya et al., 2021) and drug re-engineering as fusion proteins that interact with BBB transcytosis systems, particularly transferrin receptor monoclonal antibodies (Pardridge, 2015). This latter strategy has been coined Brain Shuttle-mAb technology which has been shown to target A $\beta$  in a mouse model of AD 55-fold compared to the parent antibody and significantly improves A $\beta$  reduction (Niewoehner et al., 2014).

A pitfall associated with immunotherapy against A $\beta$  in AD has been the adverse effects, particularly A $\beta$ -related imaging abnormalities (ARIA) such as cerebral edema (ARIA-E) and microhemorrhages (ARIA-H). These indicate a state of increased barrier permeability and leakage in these patients (Nehra et al., 2022) also observed spontaneously in patients with cerebral amyloid angiopathy. This means that BBB permeability is a double-edged sword: on the one hand, it represents a barrier needed to be crossed over for efficacious delivery of immunotherapy and on the other

hand, its dysfunction may precipitate the occurrence of adverse effects associated with such immunotherapy.

Research on disease modifying therapies in Alzheimer's has been focused on A $\beta$ , as it is the most common target of phase 2 and phase 3 clinical trials (Scheltens et al., 2021). However, anti-tau therapies have also been gaining momentum through phase 1 and 2 trials (Cummings et al., 2019). Similar to anti-amyloid antibodies, focused ultrasound has been used as an effective strategy to enhance the delivery of anti-tau antibodies in AD models (Jordão et al., 2010; Nisbet et al., 2017; Janowicz et al., 2019; Xhima et al., 2020).

Targeting the BBB may be a therapeutic strategy in itself. A leaky BBB is part of the pathophysiological conundrum of AD. Either as a consequence of inflammation and A $\beta$ -induced cerebral amyloid angiopathy or part of the AD pathophysiological cascade that results in neurodegeneration and dementia (Noe et al., 2020). Therefore, drugs that repair BBB represent a window of opportunities. In pre-clinical AD models, thrombin inhibitor dabigatran (Cortes-Canteli et al., 2019), antiplatelet agents such as dipyridamole, cilostazol, tadalafil (Fisher et al., 2011; García-Barroso et al., 2013; Hattori et al., 2016) and recombinant activated protein C (Lazic et al., 2019) have shown barrier-sealing effects (Nehra et al., 2022). Another class of drugs that may prevent barrier dysfunction is angiotensin-II receptor blockers, particularly olmesartan. It has been demonstrated to act on tight junction mRNA levels and limit oxidative stress in mice (Nakagawa et al., 2017a,b).

Stem cell therapy has also the potential to target BBB. Stem cells can be differentiated into mesenchymal stem cells, neural stem cells, and induced pluripotent stem cells. All of these have been studied in AD with several purposes beyond BBB repair. The most used has been mesenchymal stem cells (Kim et al., 2020). To repair BBB, both mesenchymal stem cells and induced pluripotent stem cells both have the potential to differentiate into endothelial cells and regenerate blood vessels. In an *APP/PS1* mouse model, bone marrow mesenchymal stem cells—VEGF treatment improved endothelial dysfunction, neovascularization and reduced senile plaques in the hippocampus with impact on cognitive dysfunction of AD transgenic animals (Garcia et al., 2014). Another lineage of stem cells that has been studied in BBB dysfunction related to AD is endothelial progenitor cells. They derive from the bone marrow and are thought to represent the main cell lineage involved in endothelial repair mechanisms (Custodia et al., 2021). In an *APP/PS1* mouse model, endothelial progenitor cells transplantation has been shown to repair BBB tight junction function, increase microvessel density and decrease A $\beta$  senile plaque deposition (Zhang et al., 2018).

## 5. Future perspectives

We still do not know today the complete pathophysiology of AD. The shortcomings of recent clinical trials evaluating anti-A $\beta$  therapies prove that. Accumulating evidence points to a strong link between BBB dysregulation and AD as we have previously demonstrated. Even so, the exact role of BBB dysfunction in the overall pathogenic cascades of AD has not yet been determined. Therefore, one major goal for future and ongoing basic and translational research is to improve our general understanding of the pathophysiological pathways underlying AD and the role played by BBB dysfunction.

The hope is that a deeper understanding of how BBB is affected in early AD will lead to the identification of novel and efficacious targets to prevent or repair neurovascular dysfunction thereby slowing or stopping AD progression.

Regarding clinical research, efforts should be put in targeting BBB to: (1) increase the delivery of CNS therapeutic substances overcoming the selectiveness of its nature and the low cerebral bioavailability of drugs administered by peripheral routes; (2) avoid BBB drug-induced dysfunction, particularly the adverse effects associated with immunotherapy such as ARIA-E and ARIA-H both secondary to BBB damage; (3) repair and enhance BBB clearance mechanisms by known transporters such as LRP-1 and RAGE reducing A $\beta$  and another toxic burden.

## 6. Conclusion

Blood-brain barrier dysfunction is an early event in AD, a burdensome disease that is lacking disease-modifying therapies. Several common molecular and genetic changes have been found to link vascular dysfunction and AD. The delivery of drugs across the central nervous system has long been and still is an obstacle. In both premises, BBB plays a key role either by representing a potential therapeutic target or a therapeutic vehicle.

## References

- Alphonsus, C. S., and Rodseth, R. N. (2014). The endothelial glycocalyx: A review of the vascular barrier. *Anaesthesia* 69, 777–784. doi: 10.1111/anae.12661
- Andrade, S., Loureiro, J. A., and Pereira, M. C. (2022). Transferrin-functionalized liposomes for the delivery of gallic acid: A therapeutic approach for Alzheimer's disease. *Pharmaceutics* 14:2163. doi: 10.3390/pharmaceutics14102163
- Andreone, B. J., Chow, B. W., Tata, A., Lacoste, B., Ben-Zvi, A., Bullock, K., et al. (2017). Blood-brain barrier permeability is regulated by lipid transport-dependent suppression of caveolae-mediated transcytosis. *Neuron* 94, 581–594. doi: 10.1016/j.neuron.2017.03.043
- Audrain, M., Haure-Mirande, J.-V., Mleczko, J., Wang, M., Griffin, J. K., St George-Hyslop, P. H., et al. (2021). Reactive or transgenic increase in microglial TYROBP reveals a TREM2-independent TYROBP-APOE link in wild-type and Alzheimer's-related mice. *Alzheimers Dement.* 17, 149–163. doi: 10.1002/alz.12256
- Bailly, M., Destrieux, C., Hommet, C., Mondon, K., Cottier, J.-P., Beaufils, E., et al. (2015). Precuneus and cingulate cortex atrophy and hypometabolism in patients with alzheimer's disease and mild cognitive impairment: MRI and (18)F-FDG PET quantitative analysis using FreeSurfer. *Biomed Res. Int.* 2015:583931. doi: 10.1155/2015/583931
- Bajracharya, R., Caruso, A. C., Vella, L. J., and Nisbet, R. M. (2021). Current and emerging strategies for enhancing antibody delivery to the brain. *Pharmaceutics* 13:2014. doi: 10.3390/pharmaceutics13122014
- Batkulwar, K., Godbole, R., Banarjee, R., Kassar, O., Williams, R. J., and Kulkarni, M. J. (2018). Advanced glycation end products modulate amyloidogenic APP processing and tau phosphorylation: A mechanistic link between glycation and the development of Alzheimer's disease. *ACS Chem. Neurosci.* 9, 988–1000. doi: 10.1021/acscchemneuro.7b00410
- Bell, R. D., Winkler, E. A., Sagare, A. P., Singh, I., LaRue, B., Deane, R., et al. (2010). Pericytes control key neurovascular functions and neuronal phenotype in the adult brain and during brain aging. *Neuron* 68, 409–427. doi: 10.1016/j.neuron.2010.09.043
- Bell, R. D., Winkler, E. A., Singh, I., Sagare, A. P., Deane, R., Wu, Z., et al. (2012). Apolipoprotein E controls cerebrovascular integrity via cyclophilin A. *Nature* 485, 512–516. doi: 10.1038/nature11087
- Bernardo-Castro, S., Sousa, J. A., Brás, A., Cecília, C., Rodrigues, B., Almendra, L., et al. (2020). Pathophysiology of blood-brain barrier permeability throughout the different stages of ischemic stroke and its implication on hemorrhagic transformation and recovery. *Front. Neurol.* 11:594672. doi: 10.3389/fneur.2020.594672
- Bilal, M., Barani, M., Sabir, F., Rahdar, A., and Kyzas, G. Z. (2020). Nanomaterials for the treatment and diagnosis of Alzheimer's disease: An overview. *Nanoimpact* 20:100251. doi: 10.1016/j.impact.2020.100251
- Bloom, G. S. (2014). Amyloid- $\beta$  and tau: The trigger and bullet in Alzheimer disease pathogenesis. *JAMA Neurol.* 71, 505–508. doi: 10.1001/jamaneurol.2013.5847
- Bourassa, P., Alata, W., Tremblay, C., Paris-Robidas, S., and Calon, F. (2019). Transferrin receptor-mediated uptake at the blood-brain barrier is not impaired by Alzheimer's disease neuropathology. *Mol. Pharm.* 16, 583–594. doi: 10.1021/acs.molpharmaceut.8b00870
- Boyé, K., Geraldo, L. H., Furtado, J., Pibouin-Fragner, L., Poulet, M., Kim, D., et al. (2022). Endothelial Unc5B controls blood-brain barrier integrity. *Nat. Commun.* 13:1169. doi: 10.1038/s41467-022-28785-9
- Calsolaro, V., and Edison, P. (2016). Neuroinflammation in Alzheimer's disease: Current evidence and future directions. *Alzheimers Dement.* 12, 719–732. doi: 10.1016/j.jalz.2016.02.010
- Chaigneau, E., Oheim, M., Audinat, E., and Charpak, S. (2003). Two-photon imaging of capillary blood flow in olfactory bulb glomeruli. *Proc. Natl. Acad. Sci. U.S.A.* 100, 13081–13086. doi: 10.1073/pnas.2133652100
- Chiu, C., Miller, M. C., Monahan, R., Osgood, D. P., Stopa, E. G., and Silverberg, G. D. (2015). P-glycoprotein expression and amyloid accumulation in human aging and Alzheimer's disease: Preliminary observations. *Neurobiol. Aging* 36, 2475–2482. doi: 10.1016/j.neurobiolaging.2015.05.020
- Chopra, H., Bibi, S., Singh, I., Kamal, M. A., Islam, F., Alhumaydhi, F. A., et al. (2022). Nanomedicines in the management of Alzheimer's disease: Current view and future prospects. *Front. Aging Neurosci.* 14:879114. doi: 10.3389/fnagi.2022.879114
- Cortes-Canteli, M., Kruyer, A., Fernandez-Nueda, I., Marcos-Diaz, A., Ceron, C., Richards, A. T., et al. (2019). Long-term dabigatran treatment delays Alzheimer's disease pathogenesis in the TgCRND8 mouse model. *J. Am. Coll. Cardiol.* 74, 1910–1923. doi: 10.1016/j.jacc.2019.07.081
- Cox, S. B., Woolsey, T. A., and Rovainen, C. M. (1993). Localized dynamic changes in cortical blood flow with whisker stimulation corresponds to matched vascular and neuronal architecture of rat barrels. *J. Cereb. Blood Flow Metab.* 13, 899–913. doi: 10.1038/jcbfm.1993.113
- Cummings, J., Blennow, K., Johnson, K., Keeley, M., Bateman, R. J., Molinuevo, J. L., et al. (2019). Anti-tau trials for Alzheimer's disease: A report from the EU/US/CTAD task force. *J. Prev. Alzheimers Dis.* 6, 157–163. doi: 10.14283/jpad.2019.14

## Author contributions

JS and CB drafted the manuscript with the contributions from SB-C, MT-P, ML, and IA. JS-F was responsible for the manuscript conception and supervision. IB, LF, JB, RG, and IS reviewed the scientific content. All authors read and approved the final manuscript.

## Conflict of interest

The authors declare that the research was conducted in the absence of any commercial or financial relationships that could be construed as a potential conflict of interest.

## Publisher's note

All claims expressed in this article are solely those of the authors and do not necessarily represent those of their affiliated organizations, or those of the publisher, the editors and the reviewers. Any product that may be evaluated in this article, or claim that may be made by its manufacturer, is not guaranteed or endorsed by the publisher.

- Custodia, A., Ouro, A., Romaus-Sanjurjo, D., Pias-Peleteiro, J. M., de Vries, H. E., Castillo, J., et al. (2021). Endothelial progenitor cells and vascular alterations in Alzheimer's disease. *Front. Aging Neurosci.* 13:811210. doi: 10.3389/fnagi.2021.811210
- de la Torre, J. C., and Mussivan, T. (1993). Can disturbed brain microcirculation cause Alzheimer's disease? *Neurol. Res.* 15, 146–153. doi: 10.1080/01616412.1993.11740127
- De Strooper, B., and Karran, E. (2016). The cellular phase of Alzheimer's disease. *Cell* 164, 603–615. doi: 10.1016/j.cell.2015.12.056
- Deane, R., Du Yan, S., Submamaryan, R. K., LaRue, B., Jovanovic, S., Hogg, E., et al. (2003). RAGE mediates amyloid-beta peptide transport across the blood-brain barrier and accumulation in brain. *Nat. Med.* 9, 907–913. doi: 10.1038/nm890
- Deane, R., Sagare, A., Hamm, K., Parisi, M., Lane, S., Finn, M. B., et al. (2008). APOE isoform-specific disruption of amyloid beta peptide clearance from mouse brain. *J. Clin. Invest.* 118, 4002–4013. doi: 10.1172/JCI36663
- Deane, R., Singh, I., Sagare, A. P., Bell, R. D., Ross, N. T., LaRue, B., et al. (2012). A multimodal RAGE-specific inhibitor reduces amyloid  $\beta$ -mediated brain disorder in a mouse model of Alzheimer disease. *J. Clin. Investigat.* 122, 1377–1392. doi: 10.1172/JCI58642
- Deo, A. K., Borson, S., Link, J. M., Domino, K., Eary, J. F., Ke, B., et al. (2014). Activity of P-glycoprotein, a  $\beta$ -amyloid transporter at the blood-brain barrier, is compromised in patients with mild Alzheimer disease. *J. Nuclear Med.* 55, 1106–1111. doi: 10.2967/jnumed.113.130161
- Dyrna, F., Hanske, S., Krueger, M., and Bechmann, I. (2013). The blood-brain barrier. *J. Neuroimmune Pharmacol.* 8, 763–773. doi: 10.1007/s11481-013-9473-5
- Edison, P., Femminella, G. D., Ritchie, C. W., Holmes, C., Walker, Z., Ridha, B. H., et al. (2021). Evaluation of liraglutide in the treatment of Alzheimer's disease. *Alzheimers Dement.* 17, 26–28. doi: 10.1002/alz.057848
- Epelbaum, S., Burgos, N., Canney, M., Matthews, D., Houot, M., Santin, M. D., et al. (2022). Pilot study of repeated blood-brain barrier disruption in patients with mild Alzheimer's disease with an implantable ultrasound device. *Alzheimers Res. Ther.* 14:40. doi: 10.1186/s13195-022-00981-1
- Faiyaz, M., Ganayee, M. A., Akhtar, S., Krishnan, S., Flora, B., Dogra, D., et al. (2021). Nanomaterials in Alzheimer's disease treatment: A comprehensive review. *Front. Biosci.* 26:851–865. doi: 10.52586/4992
- Farrer, L. A., Cupples, L. A., Haines, J. L., Hyman, B., Kukull, W. A., Mayeux, R., et al. (1997). Effects of age, sex, and ethnicity on the association between apolipoprotein E genotype and Alzheimer disease. A meta-analysis. APOE and Alzheimer disease meta analysis consortium. *JAMA* 278, 1349–1356.
- Fisher, M., Vasilevko, V., Passos, G. F., Ventura, C., Quiring, D., and Cribbs, D. H. (2011). Therapeutic modulation of cerebral microhemorrhage in a mouse model of cerebral amyloid angiopathy. *Stroke* 42, 3300–3303. doi: 10.1161/STROKEAHA.111.626655
- Fisher, R. A., Miners, J. S., and Love, S. (2022). Pathological changes within the cerebral vasculature in Alzheimer's disease: New perspectives. *Brain Pathol.* 32:e13061. doi: 10.1111/bpa.13061
- Freygang, W. H., and Sokoloff, L. (1959). Quantitative measurement of regional circulation in the central nervous system by the use of radioactive inert gas. *Adv. Biol. Med. Phys.* 6, 263–279. doi: 10.1016/B978-1-4832-3112-9.50011-6
- Gandy, S., and Ehrlich, M. E. (2023). Moving the needle on Alzheimer's disease with an anti-oligomer antibody. *N. Engl. J. Med.* 388, 80–81. doi: 10.1056/NEJMe2214981
- Gao, F., Zhao, J., Liu, P., Ji, D., Zhang, L., Zhang, M., et al. (2020). Preparation and in vitro evaluation of multi-target-directed selenium-chondroitin sulfate nanoparticles in protecting against the Alzheimer's disease. *Int. J. Biol. Macromol.* 142, 265–276. doi: 10.1016/j.ijbiomac.2019.09.098
- Garcia, K. O., Ornellas, F. L. M., Martin, P. K. M., Patti, C. L., Mello, L. E., Frussa-Filho, R., et al. (2014). Therapeutic effects of the transplantation of VEGF overexpressing bone marrow mesenchymal stem cells in the hippocampus of murine model of Alzheimer's disease. *Front. Aging Neurosci.* 6:30. doi: 10.3389/fnagi.2014.00030
- García-Barroso, C., Ricobaraza, A., Pascual-Lucas, M., Unceta, N., Rico, A. J., Goicolea, M. A., et al. (2013). Tadalafil crosses the blood-brain barrier and reverses cognitive dysfunction in a mouse model of AD. *Neuropharmacology* 64, 114–123. doi: 10.1016/j.neuropharm.2012.06.052
- Geifman, N., Brinton, R. D., Kennedy, R. E., Schneider, L. S., and Butte, A. J. (2017). Evidence for benefit of statins to modify cognitive decline and risk in Alzheimer's disease. *Alzheimers Res. Ther.* 9:10. doi: 10.1186/s13195-017-0237-y
- Gejl, M., Brock, B., Egefjord, L., Vang, K., Rungby, J., and Gjedde, A. (2017). Blood-brain glucose transfer in Alzheimer's disease: Effect of GLP-1 analog treatment. *Sci. Rep.* 7:17490. doi: 10.1038/s41598-017-17718-y
- Gejl, M., Gjedde, A., Egefjord, L., Møller, A., Hansen, S. B., Vang, K., et al. (2016). In Alzheimer's disease, 6-month treatment with GLP-1 analog prevents decline of brain glucose metabolism: Randomized, placebo-controlled, double-blind clinical trial. *Front. Aging Neurosci.* 8:108. doi: 10.3389/fnagi.2016.00108
- Goetzl, E. J., and Miller, B. L. (2017). Multicellular hypothesis for the pathogenesis of Alzheimer's disease. *FASEB J.* 31, 1792–1795. doi: 10.1096/fj.201601221R
- Guerreiro, R., Wojtas, A., Bras, J., Carrasquillo, M., Rogava, E., Majounie, E., et al. (2013). TREM2 variants in Alzheimer's disease. *New Engl. J. Med.* 368, 117–127. doi: 10.1056/NEJMoa1211851
- Halliday, M. R., Rege, S. V., Ma, Q., Zhao, Z., Miller, C. A., Winkler, E. A., et al. (2016). Accelerated pericyte degeneration and blood-brain barrier breakdown in apolipoprotein E4 carriers with Alzheimer's disease. *J. Cereb. Blood Flow Metab.* 36, 216–227. doi: 10.1038/jcbfm.2015.44
- Haluska, M., and Anthony, M. L. (2004). Osmotic blood-brain barrier modification for the treatment of malignant brain tumors. *Clin. J. Oncol. Nurs.* 8, 263–267. doi: 10.1188/04.cjon.263-267
- Han, L. (2021). Modulation of the blood-brain barrier for drug delivery to brain. *Pharmaceutics* 13:2024. doi: 10.3390/pharmaceutics13122024
- Hansen, H. H., Fabricius, K., Barkholt, P., Niehoff, M. L., Morley, J. E., Jelsing, J., et al. (2015). The GLP-1 receptor agonist liraglutide improves memory function and increases hippocampal CA1 neuronal numbers in a senescence-accelerated mouse model of Alzheimer's disease. *J. Alzheimers Dis.* 46, 877–888. doi: 10.3233/JAD-143090
- Hartz, A. M. S., Zhong, Y., Shen, A. N., Abner, E. L., and Bauer, B. (2018). Preventing P-gp ubiquitination lowers A $\beta$  brain levels in an Alzheimer's disease mouse model. *Front. Aging Neurosci.* 10:186. doi: 10.3389/fnagi.2018.00186
- Hattori, Y., Maki, T., Saito, S., Yamamoto, Y., Nagatsuka, K., and Ihara, M. (2016). Influence of low-dose aspirin on cerebral amyloid angiopathy in mice. *J. Alzheimers Dis.* 52, 1037–1045. doi: 10.3233/JAD-160013
- Huang, Z., Wong, L. W., Su, Y., Huang, X., Wang, N., Chen, H., et al. (2020). Blood-brain barrier integrity in the pathogenesis of Alzheimer's disease. *Front. Neuroendocrinol.* 59:100857. doi: 10.1016/j.yfrne.2020.100857
- Hultman, K., Strickland, S., and Norris, E. H. (2013). The APOE  $\epsilon$ 4/ $\epsilon$ 4 genotype potentiates vascular fibrin(ogen) deposition in amyloid-laden vessels in the brains of Alzheimer's disease patients. *J. Cereb. Blood Flow Metab.* 33, 1251–1258. doi: 10.1038/jcbfm.2013.76
- Iadecola, C. (2013). The pathobiology of vascular dementia. *Neuron* 80, 844–866. doi: 10.1016/j.neuron.2013.10.008
- Iadecola, C. (2017). The neurovascular unit coming of age: A journey through neurovascular coupling in health and disease. *Neuron* 96, 17–42. doi: 10.1016/j.physbeh.2017.03.040
- Ibrahim, M. M., and Gabr, M. T. (2019). Multitarget therapeutic strategies for Alzheimer's disease. *Neural Regen. Res.* 14, 437–440. doi: 10.4103/1673-5374.245463
- Iturria-Medina, Y., Sotero, R. C., Toussaint, P. J., Mateos-Pérez, J. M., Evans, A. C., and Initiative, A. D. N. (2016). Early role of vascular dysregulation on late-onset Alzheimer's disease based on multifactorial data-driven analysis. *Nat. Commun.* 7:11934. doi: 10.1038/ncomms11934
- Janowicz, P. W., Leinenga, G., Götz, J., and Nisbet, R. M. (2019). Ultrasound-mediated blood-brain barrier opening enhances delivery of therapeutically relevant formats of a tau-specific antibody. *Sci. Rep.* 9:9255. doi: 10.1038/s41598-019-45577-2
- Jevtic, S., Sengar, A. S., Salter, M. W., and McLaurin, J. (2017). The role of the immune system in Alzheimer disease: Etiology and treatment. *Ageing Res. Rev.* 40, 84–94. doi: 10.1016/j.arr.2017.08.005
- Jordão, J. F., Ayala-Grosso, C. A., Markham, K., Huang, Y., Chopra, R., McLaurin, J., et al. (2010). Antibodies targeted to the brain with image-guided focused ultrasound reduces amyloid-beta plaque load in the TgCRND8 mouse model of Alzheimer's disease. *PLoS One* 5:e10549. doi: 10.1371/journal.pone.0010549
- Juul Rasmussen, I., Tybjaerg-Hansen, A., Rasmussen, K. L., Nordestgaard, B. G., and Frikke-Schmidt, R. (2019). Blood-brain barrier transcytosis genes, risk of dementia and stroke: A prospective cohort study of 74,754 individuals. *Eur. J. Epidemiol.* 34, 579–590. doi: 10.1007/s10654-019-00498-2
- Kamaliniya, G., Khodaghali, F., Shaerzadeh, F., Tavssolian, F., Chaharband, F., Atyabi, F., et al. (2015). Cationic albumin-conjugated chelating agent as a novel brain drug delivery system in neurodegeneration. *Chem. Biol. Drug Design* 86, 1203–1214. doi: 10.1111/cbdd.12586
- Kanekiyo, T., Liu, C.-C., Shinohara, M., Li, J., and Bu, G. (2012). LRP1 in brain vascular smooth muscle cells mediates local clearance of Alzheimer's amyloid- $\beta$ . *J. Neurosci.* 32, 16458–16465. doi: 10.1523/JNEUROSCI.3987-12.2012
- Karthivashan, G., Ganesan, P., Park, S. Y., Kim, J. S., and Choi, D. K. (2018). Therapeutic strategies and nano-drug delivery applications in management of ageing Alzheimer's disease. *Drug Deliv.* 25, 307–320. doi: 10.1080/10717544.2018.1428243
- Katt, M. E., Mayo, L. N., Ellis, S. E., Mahairaki, V., Rothstein, J. D., Cheng, L., et al. (2019). The role of mutations associated with familial neurodegenerative disorders on blood-brain barrier function in an iPSC model. *Fluids Barriers CNS* 16:20. doi: 10.1186/s12987-019-0139-4
- Khatiri, R., McKinney, A. M., Swenson, B., and Janardhan, V. (2012). Blood-brain barrier, reperfusion injury, and hemorrhagic transformation in acute ischemic stroke. *Neurology* 79(13 Suppl. 1), S52–S57. doi: 10.1212/WNL.0b013e3182697e70
- Kim, J., Lee, Y., Lee, S., Kim, K., Song, M., and Lee, J. (2020). Mesenchymal stem cell therapy and Alzheimer's disease: Current status and future perspectives. *J. Alzheimers Dis.* 77, 1–14. doi: 10.3233/JAD-200219
- Kisler, K., Nelson, A. R., Montagne, A., and Zlokovic, B. V. (2017). Cerebral blood flow regulation and neurovascular dysfunction in Alzheimer disease. *Nat. Rev. Neurosci.* 18, 419–434. doi: 10.1038/nrn.2017.48
- Koch, H., and Weber, Y. G. (2019). The glucose transporter type 1 (Glut1) syndromes. *Epilepsy Behav.* 91, 90–93. doi: 10.1016/j.yebeh.2018.06.010
- Konofagou, E., Tunga, Y.-S., Choia, J., Deffieux, T., Baseria, B., and Vlachosa, F. (2012). Ultrasound-induced blood-brain barrier opening. *Curr. Pharm. Biotechnol.* 13, 1332–1345. doi: 10.2174/138920112800624364

- Kook, S.-Y., Hong, H. S., Moon, M., Ha, C. M., Chang, S., and Mook-Jung, I. (2012). A $\beta_{1-42}$ -RAGE interaction disrupts tight junctions of the blood-brain barrier via Ca<sup>2+</sup>-calcineurin signaling. *J. Neurosci.* 32, 8845–8854. doi: 10.1523/JNEUROSCI.6102-11.2012
- Kurz, C., Walker, L., Rauchmann, B.-S., and Perneczky, R. (2021). Dysfunction of the blood-brain barrier in Alzheimer's disease: Evidence from human studies. *Neuropathol. Appl. Neurobiol.* 48:e12782. doi: 10.1111/nan.12782
- Lana, E., Khanbolouki, M., Degavre, C., Samuelsson, E.-B., Åkesson, E., Winblad, B., et al. (2017). Perforin promotes amyloid beta internalisation in neurons. *Mol. Neurobiol.* 54, 874–887. doi: 10.1007/s12035-016-9685-9
- Lassen, N. A., Ingvar, D. H., and Skinhøj, E. (1978). Brain function and blood flow. *Sci. Am.* 239, 62–71. doi: 10.1038/scientificamerican1078-62
- Lazic, D., Sagare, A. P., Nikolakopoulou, A. M., Griffin, J. H., Vassar, R., and Zlokovic, B. V. (2019). 3K3A-activated protein C blocks amyloidogenic BACE1 pathway and improves functional outcome in mice. *J. Exp. Med.* 216, 279–293. doi: 10.1084/jem.20181035
- Lee, A. J., Raghavan, N. S., Bhattarai, P., Siddiqui, T., Sariya, S., Reyes-Dumeyer, D., et al. (2022). FMNL2 regulates gliovascular interactions and is associated with vascular risk factors and cerebrovascular pathology in Alzheimer's disease. *Acta Neuropathol.* 144, 59–79. doi: 10.1007/s00401-022-02431-6
- Leinenga, G., Koh, W. K., and Götz, J. (2021). A comparative study of the effects of Aducanumab and scanning ultrasound on amyloid plaques and behavior in the APP23 mouse model of Alzheimer disease. *Alzheimers Res. Ther.* 13:76. doi: 10.1186/s13195-021-00809-4
- Leinenga, G., Langton, C., Nisbet, R., and Götz, J. (2016). Ultrasound treatment of neurological diseases — current and emerging applications. *Nat. Rev. Neurol.* 12, 161–174. doi: 10.1038/nrneuro.2016.13
- Lipsman, N., Meng, Y., Bethune, A. J., Huang, Y., Lam, B., Masellis, M., et al. (2018). Blood-brain barrier opening in Alzheimer's disease using MR-guided focused ultrasound. *Nat. Commun.* 9:2336. doi: 10.1038/s41467-018-04529-6
- McCormick, J. W., Ammerman, L., Chen, G., Vogel, P. D., and Wise, J. G. (2021). Transport of Alzheimer's associated amyloid- $\beta$  catalyzed by P-glycoprotein. *PLoS One* 16:e0250371. doi: 10.1371/journal.pone.0250371
- Michalivcova, A., Banks, W., Legáth, J., and Kovac, A. (2017). Tauopathies – Focus on changes at the neurovascular unit. *Curr. Alzheimer Res.* 14, 790–801. doi: 10.2174/1567205014666170203143336
- Michalivcova, A., Majerova, P., and Kovac, A. (2020). Tau protein and its role in blood-brain barrier dysfunction. *Front. Mol. Neurosci.* 13:570045. doi: 10.3389/fnmol.2020.570045
- Miller, M. C., Tavares, R., Johanson, C. E., Hovanesian, V., Donahue, J. E., Gonzalez, L., et al. (2008). Hippocampal RAGE immunoreactivity in early and advanced Alzheimer's disease. *Brain Res.* 1230, 273–280. doi: 10.1016/j.brainres.2008.06.124
- Montagne, A., Barnes, S. R., Sweeney, M. D., Halliday, M. R., Sagare, A. P., Zhao, Z., et al. (2015). Blood-brain barrier breakdown in the aging human hippocampus. *Neuron* 85, 296–302. doi: 10.1016/j.neuron.2014.12.032
- Montagne, A., Nation, D. A., Pa, J., Sweeney, M. D., Toga, A. W., and Zlokovic, B. V. (2016). Brain imaging of neurovascular dysfunction in Alzheimer's disease. *Acta Neuropathol.* 131, 687–707. doi: 10.1007/s00401-016-1570-0
- Montagne, A., Nation, D. A., Sagare, A. P., Barisano, G., Sweeney, M. D., Chakhoyan, A., et al. (2020). APOE4 leads to blood-brain barrier dysfunction predicting cognitive decline. *Nature* 581, 71–76. doi: 10.1038/s41586-020-2247-3
- Montagne, A., Nikolakopoulou, A. M., Huuskonen, M. T., Sagare, A. P., Lawson, E. J., Lazic, D., et al. (2021). APOE4 accelerates advanced-stage vascular and neurodegenerative disorder in old Alzheimer's mice via cyclophilin A independently of amyloid- $\beta$ . *Nat. Aging* 1, 506–520. doi: 10.1038/s43587-021-00073-z
- Montagne, A., Zhao, Z., and Zlokovic, B. V. (2017). Alzheimer's disease: A matter of blood-brain barrier dysfunction? *J. Exp. Med.* 214, 3151–3169.
- Mora, P., Hollier, P.-L., Guimbal, S., Abelanet, A., Diop, A., Cornuault, L., et al. (2020). Blood-brain barrier genetic disruption leads to protective barrier formation at the Glia Limitans. *PLoS Biol.* 18:e3000946. doi: 10.1371/journal.pbio.3000946
- Nakagawa, T., Hasegawa, Y., Uekawa, K., and Kim-Mitsuyama, S. (2017a). Chronic kidney disease accelerates cognitive impairment in a mouse model of Alzheimer's disease, through angiotensin II. *Exp. Gerontol.* 87, 108–112. doi: 10.1016/j.exger.2016.11.012
- Nakagawa, T., Hasegawa, Y., Uekawa, K., Senju, S., Nakagata, N., Matsui, K., et al. (2017b). Transient mild cerebral ischemia significantly deteriorated cognitive impairment in a mouse model of Alzheimer's disease via angiotensin AT1 receptor. *Am. J. Hypertens.* 30, 141–150. doi: 10.1093/ajh/hpw099
- Nehra, G., Bauer, B., and Hartz, A. M. S. (2022). Blood-brain barrier leakage in Alzheimer's disease: From discovery to clinical relevance. *Pharmacol. Ther.* 234:108119. doi: 10.1016/j.pharmthera.2022.108119
- Nielsen, H. M., Londos, E., Minthorn, L., and Janciauskiene, S. M. (2007). Soluble adhesion molecules and angiotensin-converting enzyme in dementia. *Neurobiol. Dis.* 26, 27–35. doi: 10.1016/j.nbd.2006.11.011
- Niewoehner, J., Bohrmann, B., Collin, L., Ulrich, E., Sade, H., Maier, P., et al. (2014). Increased brain penetration and potency of a therapeutic antibody using a monovalent molecular shuttle. *Neuron* 81, 49–60. doi: 10.1016/j.neuron.2013.10.061
- Nisbet, R. M., Van der Jeugd, A., Leinenga, G., Evans, H. T., Janowicz, P. W., and Götz, J. (2017). Combined effects of scanning ultrasound and a tau-specific single chain antibody in a tau transgenic mouse model. *Brain?* 140, 1220–1230. doi: 10.1093/brain/awx052
- Niwa, K., Kazama, K., Younkin, S. G., Carlson, G. A., and Iadecola, C. (2002). Alterations in cerebral blood flow and glucose utilization in mice overexpressing the amyloid precursor protein. *Neurobiol. Dis.* 9, 61–68. doi: 10.1006/nbdi.2001.0460
- Noe, C. R., Noe-Letschnig, M., Handschuh, P., Noe, C. A., and Lanzenberger, R. (2020). Dysfunction of the blood-brain barrier—a key step in neurodegeneration and dementia. *Front. Aging Neurosci.* 12:185. doi: 10.3389/fnagi.2020.00185
- Nørgaard, C. H., Friedrich, S., Hansen, C. T., Gerdts, T., Ballard, C., Møller, D. V., et al. (2022). Treatment with glucagon-like peptide-1 receptor agonists and incidence of dementia: Data from pooled double-blind randomized controlled trials and nationwide disease and prescription registers. *Alzheimers Dement.* 8:e12268. doi: 10.1002/trc2.12268
- Ordóñez-Gutiérrez, L., and Wandosell, F. (2020). Nanoliposomes as a therapeutic tool for Alzheimer's disease. *Front. Synaptic Neurosci.* 12:20. doi: 10.3389/fnsyn.2020.00020
- Pandit, R., Chen, L., and Götz, J. (2020). The blood-brain barrier: Physiology and strategies for drug delivery. *Adv. Drug Deliv. Rev.* 16, 1–14. doi: 10.1016/j.addr.2019.11.009
- Pang, C., Yang, H., Hu, B., Wang, S., Chen, M., Cohen, D. S., et al. (2019). Identification and analysis of Alzheimer's candidate genes by an amplitude deviation algorithm. *J. Alzheimers Dis. Parkinsonism* 9:460. doi: 10.4172/2161-0460.1000460
- Pardridge, W. M. (2015). Blood-brain barrier drug delivery of IgG fusion proteins with a transferrin receptor monoclonal antibody. *Expert Opin. Drug Deliv.* 12, 207–222. doi: 10.1517/17425247.2014.952627
- Park, S. H., Baik, K., Jeon, S., Chang, W. S., Ye, B. S., and Chang, J. W. (2021). Extensive frontal focused ultrasound mediated blood-brain barrier opening for the treatment of Alzheimer's disease: A proof-of-concept study. *Transl. Neurodegener.* 10:44. doi: 10.1186/s40035-021-00269-8
- Propson, N. E., Roy, E. R., Litvinchuk, A., Köhl, J., and Zheng, H. (2021). Endothelial C3a receptor mediates vascular inflammation and blood-brain barrier permeability during aging. *J. Clin. Invest.* 131:e140966. doi: 10.1172/JCI140966
- Protas, H. D., Chen, K., Langbaum, J. B. S., Fleisher, A. S., Alexander, G. E., Lee, W., et al. (2013). Posterior cingulate glucose metabolism, hippocampal glucose metabolism, and hippocampal volume in cognitively normal, late-middle-aged persons at 3 levels of genetic risk for Alzheimer disease. *JAMA Neurol.* 70, 320–325. doi: 10.1001/2013.jamaneuro.286
- Raichle, M. E., and Mintun, M. A. (2006). Brain work and brain imaging. *Ann. Rev. Neurosci.* 29, 449–476. doi: 10.1146/annurev.neuro.29.051605.112819
- Rezaei, A. R., Ranjan, M., D'Haese, P.-F., Haut, M. W., Carpenter, J., Najib, U., et al. (2020). Noninvasive hippocampal blood-brain barrier opening in Alzheimer's disease with focused ultrasound. *Proc. Natl. Acad. Sci.* 117, 9180–9182. doi: 10.1073/pnas.2002571117
- Ridler, C. (2018). BACE1 inhibitors block new A $\beta$  plaque formation. *Nat. Rev. Neurol.* 14:126. doi: 10.1038/nrneuro.2018.12
- Romanitan, M. O., Popescu, B. O., Winblad, B., Bajenaru, O. A., and Bogdanovic, N. (2007). Occludin is overexpressed in Alzheimer's disease and vascular dementia. *J. Cell. Mol. Med.* 11, 569–579. doi: 10.1111/j.1582-4934.2007.00047.x
- Ryu, J. K., and McLarnon, J. G. (2009). A leaky blood-brain barrier, fibrinogen infiltration and microglial reactivity in inflamed Alzheimer's disease brain. *J. Cell. Mol. Med.* 13, 2911–2925. doi: 10.1111/j.1582-4934.2008.00434.x
- Sadegh Malvajerd, S., Izadi, Z., Azadi, A., Kurd, M., Derakhshankhah, H., Sharifzadeh, M., et al. (2019). Neuroprotective potential of curcumin-loaded nanostructured lipid carrier in an animal model of Alzheimer's disease: Behavioral and biochemical evidence. *J. Alzheimers Dis.* 69, 671–686. doi: 10.3233/JAD-190083
- Salloway, S., Gur, T., Berzin, T., Zipser, B., Correia, S., Hovanesian, V., et al. (2002). Effect of APOE genotype on microvascular basement membrane in Alzheimer's disease. *J. Neurol. Sci.* 20, 183–187. doi: 10.1016/s0022-510x(02)00288-5
- Sánchez-Campillo, M., Ruiz-Pastor, M. J., Gázquez, A., Marín-Muñoz, J., Noguera-Perea, F., Ruiz-Alcaraz, A. J., et al. (2019). Decreased blood level of MFSD2a as a potential biomarker of Alzheimer's disease. *Int. J. Mol. Sci.* 21:70. doi: 10.3390/ijms21010070
- Sassi, C., Nalls, M. A., Ridge, P. G., Gibbs, J. R., Lupton, M. K., Troakes, C., et al. (2018). Mendelian adult-onset leukodystrophy genes in Alzheimer's disease: Critical influence of CSF1R and NOTCH3. *Neurobiol. Aging* 66, 179. e17–e29. doi: 10.1016/j.neurobiolaging.2018.01.015
- Scheltens, P., De Strooper, B., Kivipelto, M., Holstege, H., Chételat, G., Teunissen, C. E., et al. (2021). Alzheimer's disease. *Lancet* 397, 1577–1590. doi: 10.1016/S0140-6736(20)32205-4
- Schneider, L. (2020). A resurrection of aducanumab for Alzheimer's disease. *Lancet Neurol.* 19, 111–112. doi: 10.1016/S1474-4422(19)30480-6
- Selkoe, D. J., and Hardy, J. (2016). The amyloid hypothesis of Alzheimer's disease at 25 years. *EMBO Mol. Med.* 8, 595–608. doi: 10.15252/emmm.201606210
- Sengillo, J. D., Winkler, E. A., Walker, C. T., Sullivan, J. S., Johnson, M., and Zlokovic, B. V. (2013). Deficiency in mural vascular cells coincides with blood-brain barrier disruption in Alzheimer's disease. *Brain Pathol.* 23, 303–310. doi: 10.1111/bpa.12004

- Shibata, M., Yamada, S., Kumar, S. R., Calero, M., Bading, J., Frangione, B., et al. (2000). Clearance of Alzheimer's amyloid-ss(1-40) peptide from brain by LDL receptor-related protein-1 at the blood-brain barrier. *J. Clin. Invest.* 106, 1489–1499. doi: 10.1172/JCI10498
- Shinohara, M., Sato, N., Kurinami, H., Takeuchi, D., Takeda, S., Shimamura, M., et al. (2011). Reduction of brain beta-amyloid (A $\beta$ ) by fluvastatin, a hydroxymethylglutaryl-CoA reductase inhibitor, through increase in degradation of amyloid precursor protein C-terminal fragments (APP-CTFs) and A $\beta$  clearance. *J. Biol. Chem.* 285, 22091–22102. doi: 10.1074/jbc.M110.102277
- Shulman, J. M., Chipendo, P., Chibnik, L. B., Aubin, C., Tran, D., Keenan, B. T., et al. (2011). Functional screening of Alzheimer pathology genome-wide association signals in *Drosophila*. *Am. J. Hum. Genet.* 88, 232–238. doi: 10.1016/j.ajhg.2011.01.006
- Simpson, I. A., Chundu, K. R., Davies-Hill, T., Honer, W. G., and Davies, P. (1994). Decreased concentrations of GLUT1 and GLUT3 glucose transporters in the brains of patients with Alzheimer's disease. *Ann. Neurol.* 35, 546–551. doi: 10.1002/ana.410350507
- Srivastava, S., Ahmad, R., and Khare, S. K. (2021). Alzheimer's disease and its treatment by different approaches: A review. *Eur. J. Med. Chem.* 216:113320. doi: 10.1016/j.ejmech.2021.113320
- Storck, S. E., and Pietrzik, C. U. (2017). Endothelial LRP1 - A potential target for the treatment of Alzheimer's disease : Theme: Drug discovery, development and delivery in Alzheimer's disease guest editor: Davide Brambilla. *Pharm. Res.* 34, 2637–2651. doi: 10.1007/s11095-017-2267-3
- Sweeney, M. D., Sagare, A. P., and Zlokovic, B. V. (2018). Blood-brain barrier breakdown in Alzheimer disease and other neurodegenerative disorders. *Nat. Rev. Neurol.* 14, 133–150. doi: 10.1038/nrneuro.2017.188
- Tampi, R. R., Forester, B. P., and Agronin, M. (2021). Aducanumab: Evidence from clinical trial data and controversies. *Drugs Context* 10:2021-7-3.
- Tarasoff-Conway, J. M., Carare, R. O., Osorio, R. S., Glodzik, L., Butler, T., Fieremans, E., et al. (2015). Clearance systems in the brain—implications for Alzheimer disease. *Nat. Rev. Neurol.* 11, 457–470. doi: 10.1038/nrneuro.2015.119
- Tosi, G., Pederzoli, F., Belletti, D., Vandelli, M. A., Forni, F., Duskey, J. T., et al. (2019). Nanomedicine in Alzheimer's disease: Amyloid beta targeting strategy. *Prog. Brain Res.* 245, 57–88. doi: 10.1016/bs.pbr.2019.03.001
- Vadini, F., Simeone, P. G., Boccatonda, A., Guagnano, M. T., Liani, R., Tripaldi, R., et al. (2020). Liraglutide improves memory in obese patients with prediabetes or early type 2 diabetes: A randomized, controlled study. *Int. J. Obes.* 44, 1254–1263.
- van Assema, D. M. E., Lubberink, M., Bauer, M., van der Flier, W. M., Schuit, R. C., Windhorst, A. D., et al. (2011). Blood-brain barrier P-glycoprotein function in Alzheimer's disease. *Brain* 135, 181–189. doi: 10.1093/brain/awr298
- van Dyck, C. H. (2018). Anti-Amyloid- $\beta$  monoclonal antibodies for Alzheimer's disease: Pitfalls and promise. *Biol. Psychiatry* 83, 311–319. doi: 10.1016/j.biopsych.2017.08.010
- van Dyck, C. H., Swanson, C. J., Aisen, P., Bateman, R. J., Chen, C., Gee, M., et al. (2022). Lecanemab in early Alzheimer's disease. *N. Engl. J. Med.* 388, 9–21. doi: 10.1056/NEJMoa2212948
- Wan, W., Cao, L., Liu, L., Zhang, C., Kalionis, B., Tai, X., et al. (2015). A $\beta$ <sub>1–42</sub> oligomer-induced leakage in an *in vitro* blood-brain barrier model is associated with up-regulation of RAGE and metalloproteinases, and down-regulation of tight junction scaffold proteins. *J. Neurochem.* 134, 382–393. doi: 10.1111/jnc.13122
- Wang, D., Chen, F., Han, Z., Yin, Z., Ge, X., and Lei, P. (2021). Relationship between amyloid- $\beta$  deposition and blood-brain barrier dysfunction in Alzheimer's disease. *Front. Cell. Neurosci.* 15:695479. doi: 10.3389/fncel.2021.695479
- Wang, H., Chen, F., Du, Y.-F., Long, Y., Reed, M. N., Hu, M., et al. (2018). Targeted inhibition of RAGE reduces amyloid- $\beta$  influx across the blood-brain barrier and improves cognitive deficits in db/db mice. *Neuropharmacology* 131, 143–153. doi: 10.1016/j.neuropharm.2017.12.026
- Wasielewska, J. M., and White, A. R. (2022). Focused ultrasound-mediated drug delivery in humans – A path towards translation in neurodegenerative diseases. *Pharm. Res.* 39, 427–439. doi: 10.1007/s11095-022-03185-2
- Willenbring, R. C., Jin, F., Hinton, D. J., Hansen, M., Choi, D.-S., Pavelko, K. D., et al. (2016). Modulatory effects of perforin gene dosage on pathogen-associated blood-brain barrier (BBB) disruption. *J. Neuroinflammation* 13:222. doi: 10.1186/s12974-016-0673-9
- Winblad, B., Amouyel, P., Andrieu, S., Ballard, C., Brayne, C., Brodaty, H., et al. (2016). Defeating Alzheimer's disease and other dementias: A priority for European science and society. *Lancet Neurol.* 15, 455–532. doi: 10.1016/S1474-4422(16)00062-4
- Winkler, E. A., Nishida, Y., Sagare, A. P., Rege, S. V., Bell, R. D., Perlmutter, D., et al. (2015). GLUT1 reductions exacerbate Alzheimer's disease vasculo-neuronal dysfunction and degeneration. *Nat. Neurosci.* 18, 521–530. doi: 10.1038/nn.3966
- Wu, Z., Guo, H., Chow, N., Sallstrom, J., Bell, R. D., Deane, R., et al. (2005). Role of the MEOX2 homeobox gene in neurovascular dysfunction in Alzheimer disease. *Nat. Med.* 11, 959–965. doi: 10.1038/nm1287
- Wyatt-Johnson, S., and Brutkiewicz, R. (2020). The complexity of microglial interactions with innate and adaptive immune cells in Alzheimer's disease. *Front. Aging Neurosci.* 12:592359. doi: 10.3389/fnagi.2020.592359
- Xhima, K., Markham-Coultes, K., Nedev, H., Heinen, S., Saragovi, H. U., Hynynen, K., et al. (2020). Focused ultrasound delivery of a selective TrkA agonist rescues cholinergic function in a mouse model of Alzheimer's disease. *Sci. Adv.* 6:eax6646. doi: 10.1126/sciadv.aax6646
- Xiao, X., Guo, L., Liao, X., Zhou, Y., Zhang, W., Zhou, L., et al. (2021). The role of vascular dementia associated genes in patients with Alzheimer's disease: A large case-control study in the Chinese population. *CNS Neurosci. Ther.* 27, 1531–1539. doi: 10.1111/cns.13730
- Xie, L., Kang, H., Xu, Q., Chen, M. J., Liao, Y., Thiagarajan, M., et al. (2013). Sleep drives metabolite clearance from the adult brain. *Science* 342, 373–377. doi: 10.1126/science.1241224
- Yang, A. C., Vest, R. T., Kern, F., Lee, D. P., Agam, M., Maat, C. A., et al. (2022). A human brain vascular atlas reveals diverse mediators of Alzheimer's risk. *Nature* 603, 885–892. doi: 10.1038/s41586-021-04369-3
- Zenaro, E., Piacentino, G., and Constantini, G. (2017). The blood-brain barrier in Alzheimer's disease. *Neurobiol. Dis.* 107, 41–56. doi: 10.1016/j.nbd.2016.07.007
- Zenaro, E., Pietronigro, E., Bianca, V. D., Piacentino, G., Marongiu, L., Budui, S., et al. (2015). Neutrophils promote Alzheimer's disease-like pathology and cognitive decline via LFA-1 integrin. *Nat. Med.* 21, 880–886. doi: 10.1038/nm.3913
- Zhang, S., Zhi, Y., Li, F., Huang, S., Gao, H., Han, Z., et al. (2018). Transplantation of *in vitro* cultured endothelial progenitor cells repairs the blood-brain barrier and improves cognitive function of APP/PS1 transgenic AD mice. *J. Neurol. Sci.* 387, 6–15. doi: 10.1016/j.jns.2018.01.019
- Zhang, W., Bai, S., Yang, J., Zhang, Y., Liu, Y., Nie, J., et al. (2020). FoxO1 overexpression reduces A $\beta$  production and tau phosphorylation *in vitro*. *Neurosci. Lett.* 738:135322. doi: 10.1016/j.neulet.2020.135322
- Zhao, Z., Nelson, A. R., Betsholtz, C., and Zlokovic, B. V. (2015). Establishment and dysfunction of the blood-brain barrier. *Cell* 163, 1064–1078. doi: 10.1016/j.cell.2015.10.067
- Zheng, P.-P., Romme, E., van der Spek, P. J., Dirven, C. M. F., Willemsen, R., and Kros, J. M. (2010). Glut1/SLC2A1 is crucial for the development of the blood-brain barrier *in vivo*. *Ann. Neurol.* 68, 835–844. doi: 10.1002/ana.22318
- Zhong, G., Long, H., Zhou, T., Liu, Y., Zhao, J., Han, J., et al. (2022). Blood-brain barrier Permeable nanoparticles for Alzheimer's disease treatment by selective mitophagy of microglia. *Biomaterials* 288:121690. doi: 10.1016/j.biomaterials.2022.121690
- Zhu, C., Yang, Y., Li, X., Chen, X., Lin, X., and Wu, X. (2022). Develop potential multi-target drugs by self-assembly of quercetin with amino acids and metal ion to achieve significant efficacy in anti-Alzheimer's disease. *Nano Res.* 15, 5173–5182. doi: 10.1007/s12274-021-4066-8
- Zlokovic, B. V. (2011). Neurovascular pathways to neurodegeneration in Alzheimer's disease and other disorders. *Nat. Rev. Neurosci.* 12, 723–738. doi: 10.1038/nrn3114
- Zuliani, G., Cavalieri, M., Galvani, M., Passaro, A., Munari, M. R., Bosi, C., et al. (2008). Markers of endothelial dysfunction in older subjects with late onset Alzheimer's disease or vascular dementia. *J. Neurol. Sci.* 272, 164–170. doi: 10.1016/j.jns.2008.05.020